

Improving Health Care Equity: Accreditation Requirements and Resources

Christina L. Cordero, PhD, MPH

Senior Project Director, Healthcare Standards Development
Division of Healthcare Quality Evaluation and Improvement

September 14, 2023

Session Objectives

- List key areas addressed by the new Joint Commission National Patient Safety Goal Requirements to improve health care equity.
- Describe implementation strategies related to the New National Patient Safety Goal Requirements to improve health care equity.

Health Care Equity is a Quality and Safety Priority

Health care equity is a quality of care problem.

Needs a similar approach to other patient safety priorities:

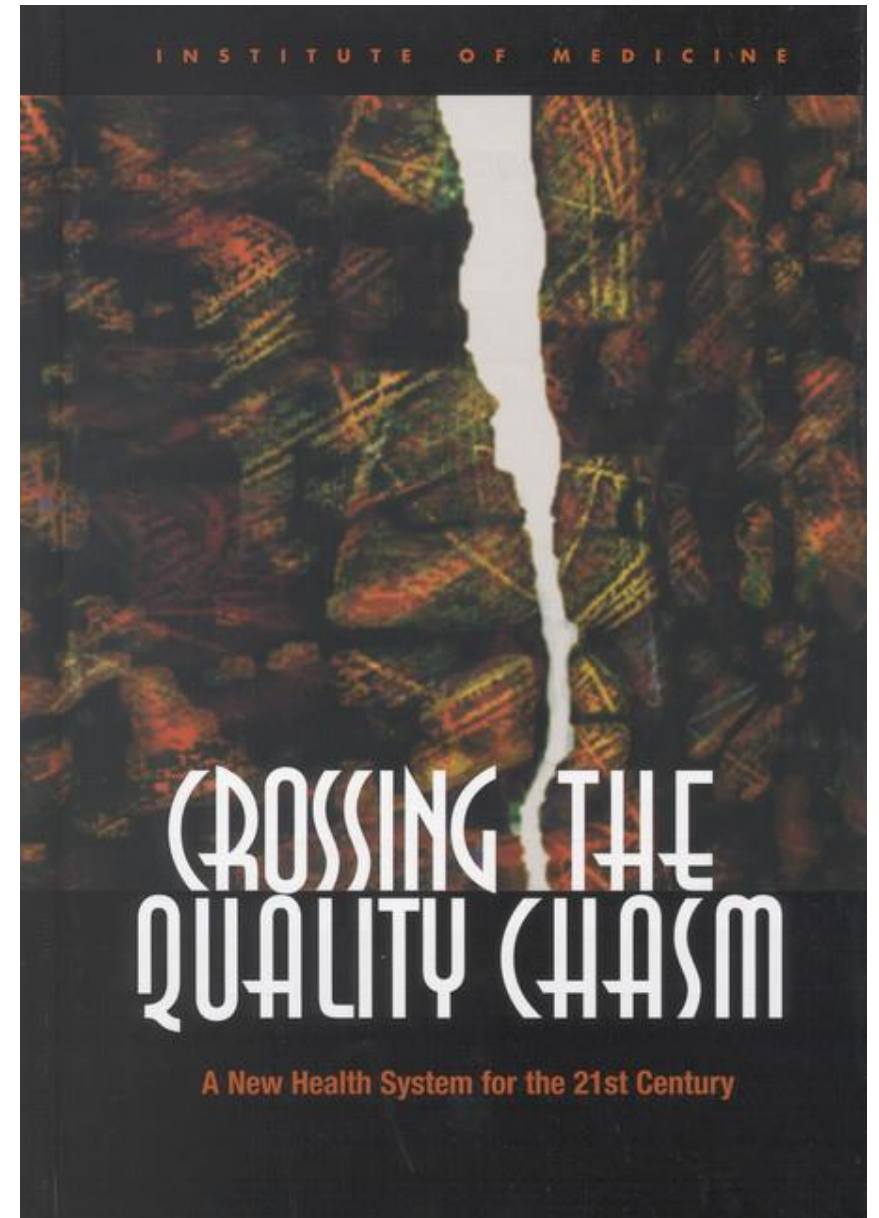
- Understand the root causes
- Address with targeted interventions



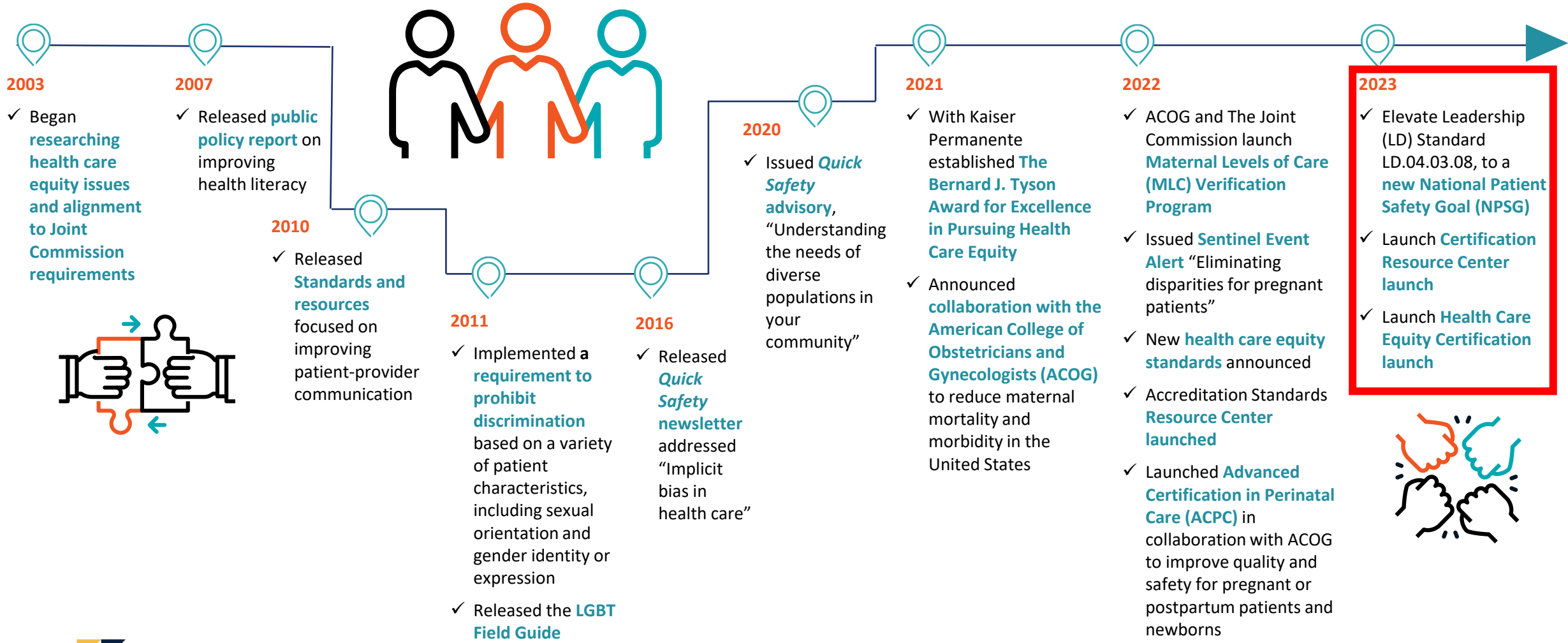
Equity as Quality Domain

6 Domains of Quality:

- Safety
- Effectiveness
- Patient-Centeredness
- Timeliness
- Efficiency
- **Equity:** Providing care that does not vary in quality because of personal characteristics such as gender, ethnicity, geographic location, and socioeconomic status.



Our Journey to Advance Equity



New National Patient Safety Goal

- NPSG.16.01.01 to improve health care equity
 - 6 EP requirements (promoted from Leadership chapter)
 - Resources in Resource Center
- Applicable to HAP, CAH, selected services in AHC/BHC
- Release Timeline:
 - Prepublication requirements (Jan 2022)
 - Implementation (July 2023)



New NPSG.16.01.01

NPSG.16.01.01: Improving health care equity for the hospital's patients is a quality and safety priority.

Commitment, vision, creativity, and sustained effort at all levels (including the C-suite and the Board)

Established leaders and standardized structures and processes in place to improve health care equity

Efforts should be fully integrated with existing quality improvement activities within the organization

Designate a Leader (EP 1)

The hospital designates an individual(s) to lead activities to improve health care equity for the hospital's patients.

Intent and Implementation Strategies:

- Establishes clear lines of accountability
- Identify an individual that will have responsibilities for activities to reduce health care disparities.
- Consider how health care equity initiatives are coordinated across the hospital.

Resources for EP 1

Health Equity Snapshot: A Toolkit for Action

This resource includes a discussion guide to help health care leaders facilitate robust discussions about health equity. (Source: AHA IFDHE)

The Health Equity Roadmap

The resource includes an electronic assessment tool that provides hospitals and health systems with their current position on the health equity journey. (Source: AHA IFDHE)



Assess Health-Related Social Needs (EP 2)

The hospital assesses the patient's health-related social needs and provides information about community resources and support services.

Intent and Implementation Strategies:

- Addressing health-related social needs (HRSNs) can help reduce health care disparities and improve health outcomes
- Flexibility to determine which patients to assess for HRSNs, which HRSNs to assess, and which resources to provide to address HRSNs
- Focus on a representative sample or collect data from all patients
- Connect patients with resources and support services in the community

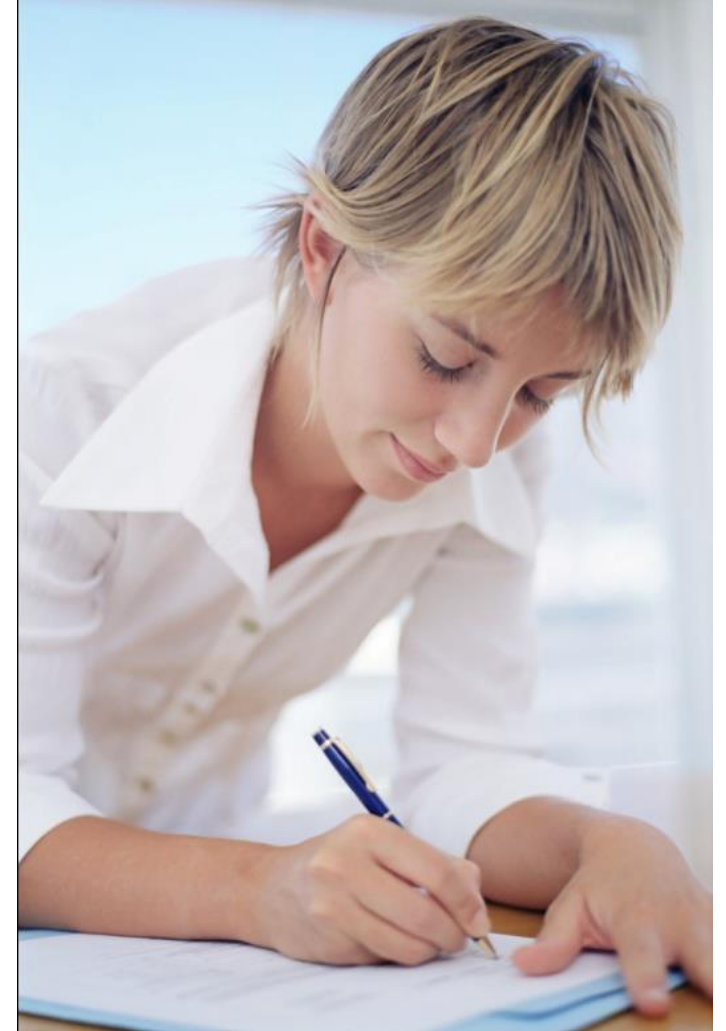
Resources for EP 2

The PRAPARE Implementation and Action Toolkit

This toolkit provides sample scripts (Chapter 2) that have been developed to educate patients on the importance of collecting data on social determinants of health and how that information will inform care and services. (Source: NACHC)

A Guide to Using the Accountable Health Communities Health-Related Social Needs Screening Tool: Promising Practices and Key Insights

This guide describes the HRSN Screening Tool from the Accountable Health Communities (AHC) Model and share promising practices for universal screening. (Source: CMS)



Identify Health Care Disparities (EP 3)

The hospital identifies health care disparities in its patient population by stratifying quality and safety data using the sociodemographic characteristics of the hospital's patients.

Intent and Implementation Strategies:

- Understand which processes and outcomes vary by sociodemographic characteristics
- Organizations choose which measures to stratify and which sociodemographic characteristics to use for stratification:
 - Focus on high-risk topics or select measures that affect all patients
 - Examples of sociodemographic characteristics in Notes

Resources for EP 3

A Framework for Stratifying Race, Ethnicity and Language Data

This guide provides a framework for stratification of patient race, ethnicity and language data and guidance on how to use the data to identify and address health care disparities. Sample dashboards are also provided. (Source: AHA)

Health Equity, Diversity, & Inclusion Measures for Hospitals and Health System Dashboards

This document provides a table format on steps to address health care disparities identified through stratified data and includes multiple links to additional resources. (Source: AHA IFDHE)

Develop an Action Plan (EP 4)

The hospital develops a written action plan that describes how it will improve health care equity by addressing at least one of the health care disparities identified in its patient population.

Intent and Implementation Strategies:

- Focus on reducing one health care disparity



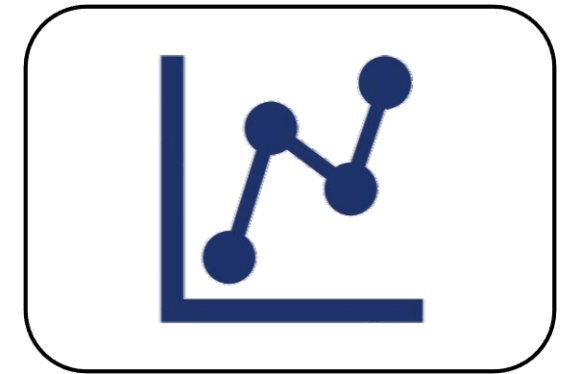
Specific population(s) of focus



Organization's improvement goal



Strategies and resources to achieve the goal



Process to monitor and report progress

Resources for EP 4



Disparities Impact Statement

This fillable worksheet guides the development of a 5-step action plan to identify health disparities and priority populations, define goals, establish a health equity strategy, determine what your organization needs to implement its strategy. (Source: CMS)

PRAPARE Readiness Assessment Tool

The tool asks a series of questions to help organizations determine their level of readiness for moving forward with health equity-related efforts.

(Source: NACHC)

Make Improvements (EP 5)

The hospital acts when it does not achieve or sustain the goal(s) in its action plan to improve health care equity.

Intent and Implementation Strategies:

- Assess progress and evaluate whether efforts to reduce health care disparities are successful
- Identify opportunities to revise the action plan or provide additional resources to achieve goal(s)
 - Review stratified quality and safety metrics to track progress
 - Collect feedback from patients about new services or interventions
 - Evaluate staff training and education needs

Resources for EP 5

The Health Leads Social Health Data Toolkit

This toolkit offers detailed instructions on screening process metrics, building run charts using your screening data, setting targets, and monitoring to identify where improvement may be needed.

(Source: Health Leads)

Health Equity, Diversity & Inclusion Measures for Hospitals and Health System Dashboards

This resource provides guidance on operationalizing measures under data collection, stratification and use, cultural competency training, diversity and inclusion in leadership and governance, and strengthen community partnerships. (Source: AHA)



Keep Stakeholders Informed (EP 6)

At least annually, the hospital informs key stakeholders, including leaders, licensed practitioners, and staff, about its progress to improve health care equity.

Intent and Implementation Strategies:

- Leadership, practitioners, and staff need to be aware of the organization’s initiatives to address health care disparities and understand their role
- Important to receive updates about the challenges and successes of the organization’s efforts to improve care for all patients
 - Examples: Presentations (quarterly meetings, town hall, staff meetings), newsletters, progress boards, intranet page

Resources for EP 6



Community-Driven Health Equity Action Plans

This resource provides an outline for a two-page summary of your health equity action plan to help engage your stakeholders in a targeted way.

(Source: NAM)

The PRAPARE Implementation and Action Toolkit

This toolkit provides information on engaging stakeholders (Chapter 2). It includes example steps an organization can take to engage stakeholders, from staff to leadership to patients, based off of lessons learned from PRAPARE health center pilot sites. (Source: NACHC)

Accreditation Standards Resource Center

<https://www.jointcommission.org/our-priorities/health-care-equity/standards-and-resource-center/>

Focused Resources to Support Standards Compliance



Make Health Care Equity a Leader-Driven Priority



Assess Health-Related Social



Use Data to Identify Disparities Across Patient Groups



Monitor Health Care Equity



Evidence-based Interventions



Snapshots

Brief synopses of approaches used by other organizations.



Soundbites

Brief videos of organizations' lessons learned.



Strategies

Links to resources such as toolkits, templates, and guides.

On Demand Webinar

<https://attendee.gotowebinar.com/recording/5502581134502279170>



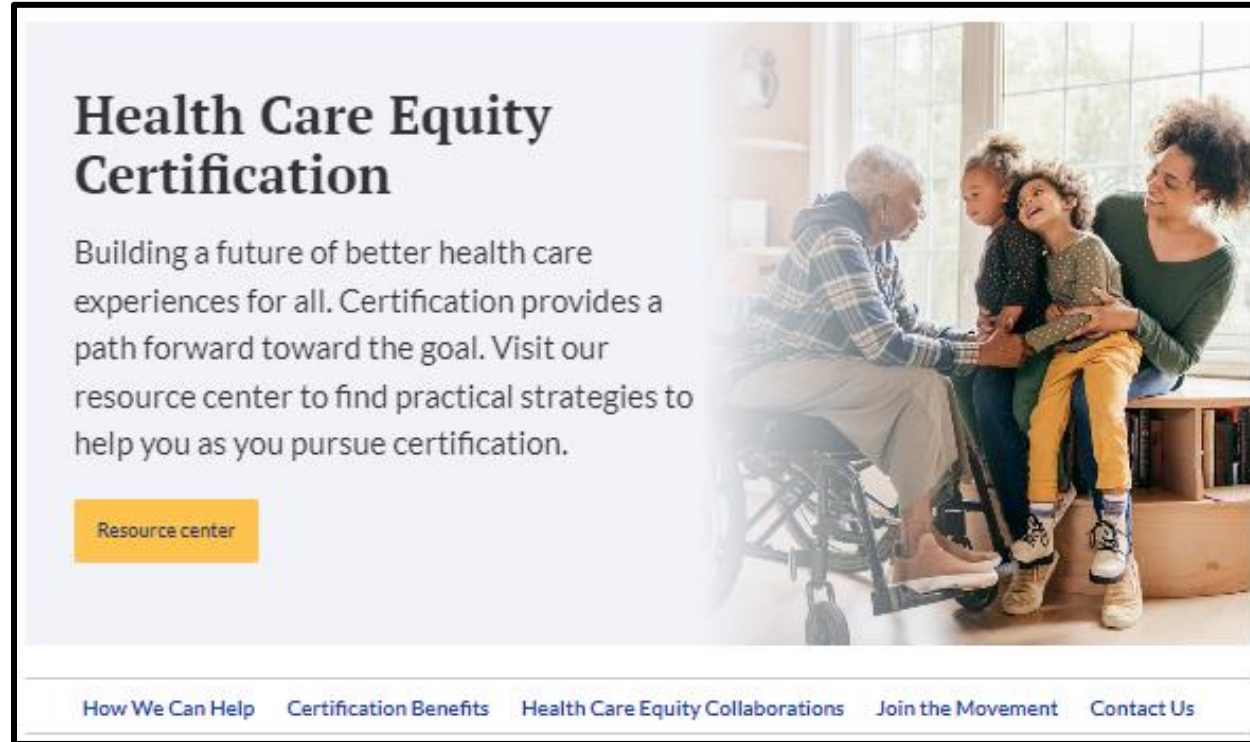
On Demand Pioneers in Quality Webinar - Joint Commission
Improving Health Care Equity Standards and Resources (Oct 2022)

Free webinar

Overview of new requirements and resource center
LD standard language, same expectations in NPSG

New Advanced Certification Program

<https://www.jointcommission.org/what-we-offer/certification/certifications-by-setting/hospital-certifications/health-care-equity-certification/>



Health Care Equity Certification

Building a future of better health care experiences for all. Certification provides a path forward toward the goal. Visit our resource center to find practical strategies to help you as you pursue certification.

[Resource center](#)

[How We Can Help](#) [Certification Benefits](#) [Health Care Equity Collaborations](#) [Join the Movement](#) [Contact Us](#)

- Voluntary program
- Recognizes hospitals going above and beyond the accreditation requirements
- Resource center available
- 2-year award

On Demand webinar recording

<https://register.gotowebinar.com/recording/7420957350596289537>

Certification Chapters



Leadership

- Strategic priority
- Board involvement



Collaboration

- Engage patients
- Engage community organizations



Data Collection

- Community
- Patients
- Staff



Provision of Care

- Workforce diversity
- Staff training
- Communication
- Disabilities
- Health-related social needs



Performance Improvement

- Improve services
- Improve staff diversity, equity, and inclusion

Certification Resource Center

<https://www.jointcommission.org/our-priorities/health-care-equity/certification-resource-center/>

Focused Resources to Support Standards Compliance



Leadership



Collaboration



Data Collection



Provision of Care



Strategies

Links to resources such as toolkits, templates, and guides.



Spotlights

Brief written synopses and videos of successful initiatives and practices implemented by other organizations.

Questions?

For more information, please contact the Department of Standards and Survey Methods (DSSM) using the form located at <https://dssminquiries.jointcommission.org>

Disclaimer

- These slides are current as of **(08/18/23)**. The Joint Commission reserves the right to change the content of the information, as appropriate.
- These slides are only meant to be cue points, which were expounded upon verbally by the original presenter and are not meant to be comprehensive statements of standards interpretation or represent all the content of the presentation. Thus, care should be exercised in interpreting Joint Commission requirements based solely on the content of these slides.
- These slides are copyrighted and may not be further used, shared or distributed without permission of The Joint Commission. Distribution of the speaker's presentation other than in PDF format is expressly prohibited.