

Venkatraghavan Sundaram, PhD; Leslie Wainwright, PhD; Akshay Arora, MS; Vency Varghese; Lindsay Zimmerman, PhD

## The Need

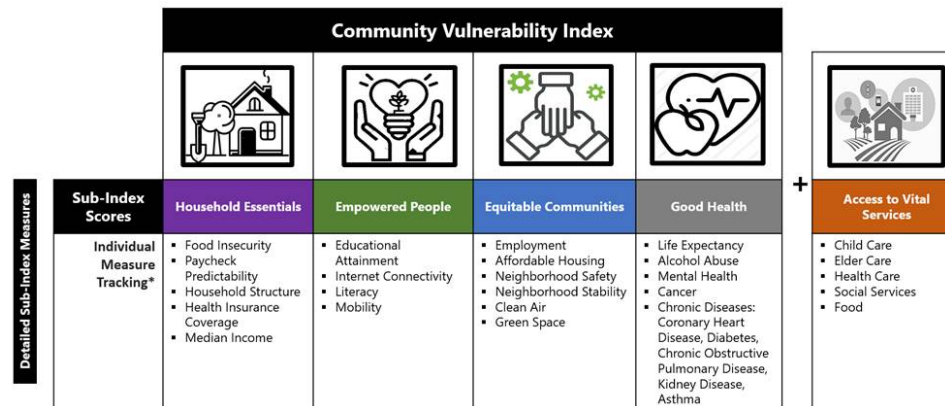
Despite the increasing awareness of the connection between Social Determinants of Health (SDOH), health and health equity, few organizations have the adequate *contextualized* insights needed to transform available data into meaningful, actionable information to better address health and non-health needs. Reasons for lack of context include disparate data sources and lack of normalization across a geography and a community gold standard enabling broad collaboration across organizations.

## Project Aim

To create a tool enabling local stakeholders to visualize key SDOH indicators providing deep community vulnerability insights needed to create resources, programs and collaborations to improve whole person health and achieve health equity.

## Actionable Data-SDOH Insights Visualization

### Community Vulnerability Compass



### PCCI's Community Vulnerability Compass (CVC) Tool Features

- End-user Power BI visualization dashboard
- 26 key indicators (curated, normalized and indexed) to measure health, resiliency and economic vibrancy of neighborhoods at the census tract, or block-group levels.
- Visualizable indices at the individual measure level, aggregated sub-index level and rolled-up single index score; it is the sub-index categories that can vary substantially and highlight greatest needs.
- Individual measures reflect the Healthy People 2020 framework: economic stability, education, social/community context, health/healthcare, and neighborhood/built environment.

## Results/Impact

- Proof-of-Concept fully completed
- CVC is now widely used as a foundational data input to address Community Health Needs Assessment and Community Needs Assessment initiatives for Dallas County
- CVC facilitates whole person health and community-based interventions

### Block Level Insights

The CVC indices were created at the block-group level to reflect both individual- and neighborhood-level characteristics, as use of ZIP codes often masks important variation within communities.

