

The Trust for Public Land: Smart Growth for Dallas

DFW Hospital Council
September 7, 2018



Where could you walk in ten minutes?





The Trust for Public Land — land for people

THE
TRUST
FOR
PUBLIC
LAND

Creating more parks for Texans



Since 1979, The Trust for Public Land has protected nearly 40,000 acres of Texas's most important natural places, including over 1,800 acres right here in North Texas.



Urban green assets offer
cost-effective and unique
strategies for addressing
economic
social
and *ecological*
challenges of today.







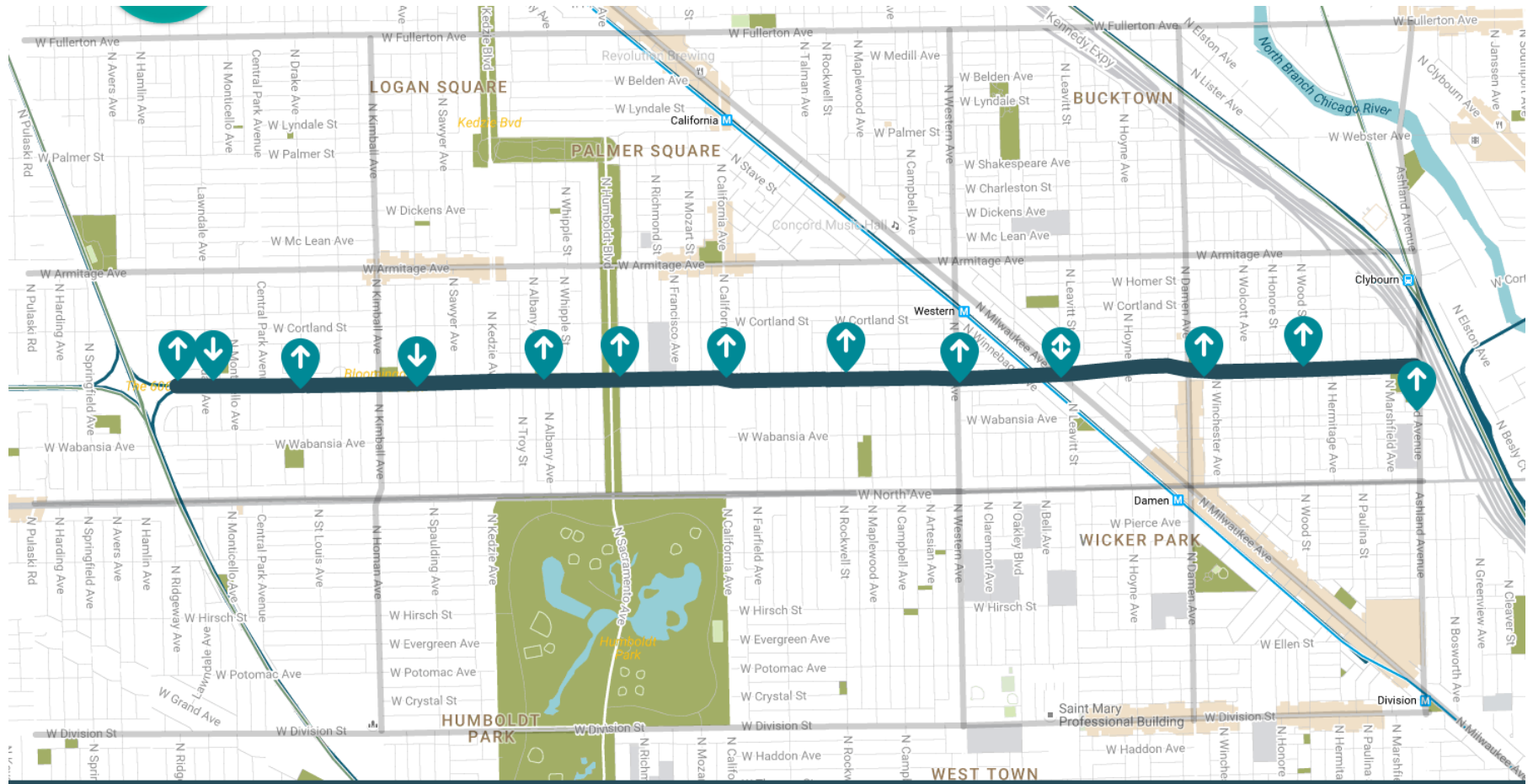
A living work of art



A living work of art



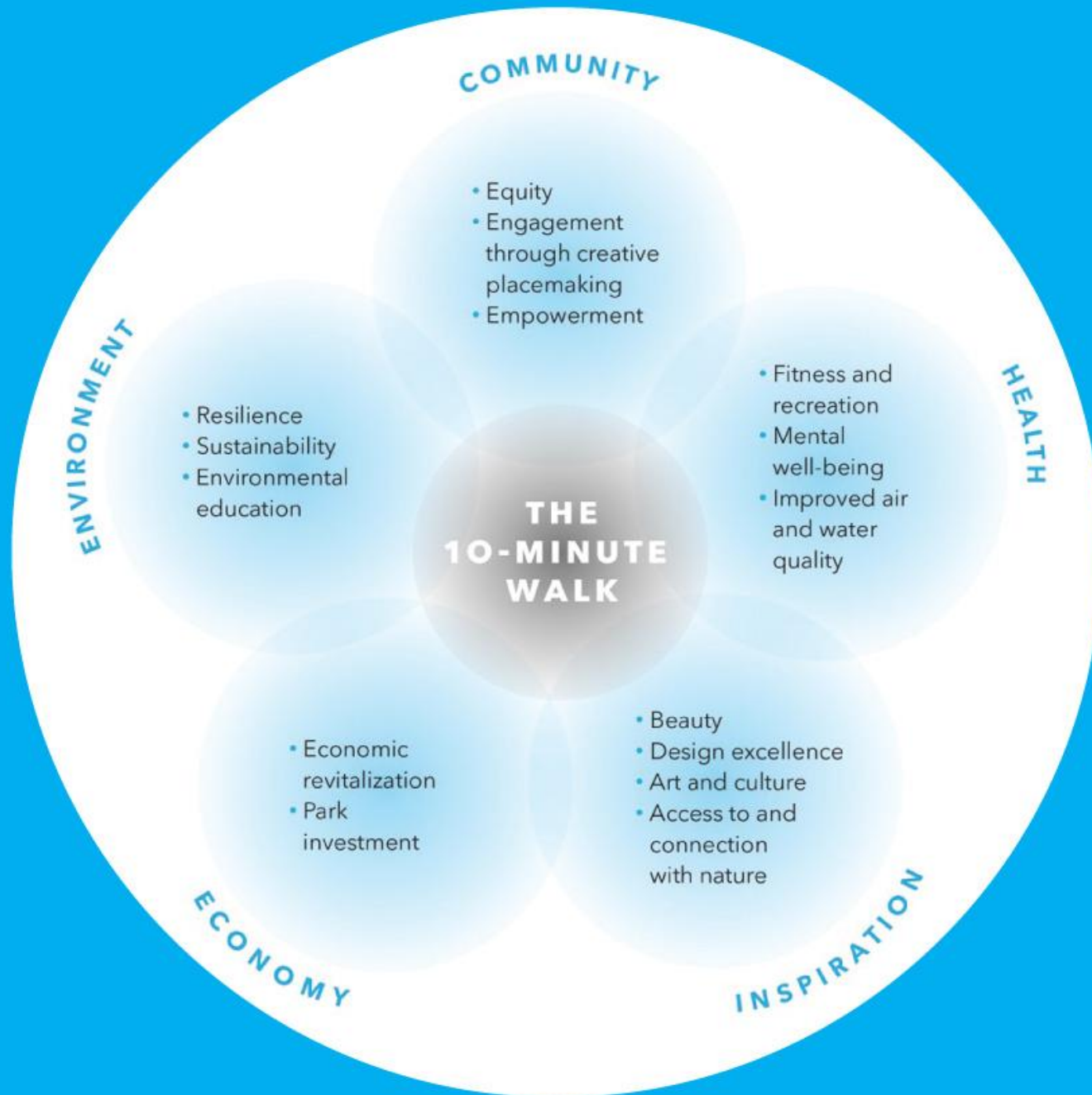
East to west





Santa Fe Trail





PARKS MAKE CITIES RESILIENT

“Urban Resilience is the capacity of individuals, communities, institutions, businesses, and systems within a city to survive, adapt, and grow no matter what kinds of chronic stresses and acute shocks they experience.”

– 100 Resilient Cities

Smart Growth *for* Dallas

*Using data and GIS to improve the social, economic,
and environmental resilience of Dallas*



Our Five Planning Objectives

Smart Growth for Dallas seeks to identify areas where parks, trails, and green assets can address five key planning objectives:

CONNECT

COOL

ABSORB/
PROTECT

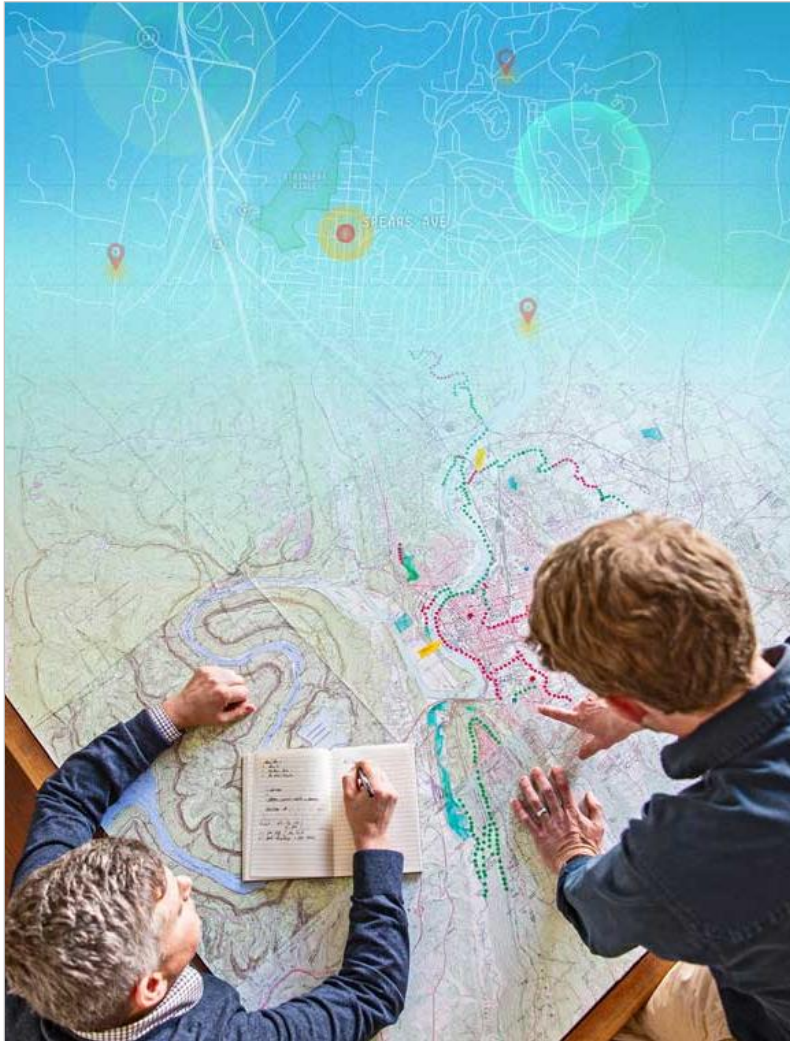
HEALTH

EQUITY

Our rigorous data-based methodology has been successfully deployed in nearly 20 other cities across the country, including:

- Los Angeles, CA
- New York, NY
- Boston, MA
- Denver, CO
- New Orleans, LA
- Nashville, TN
- Philadelphia, PA
- Cleveland, OH
- Providence, RI

Using GIS to find the best places for parks



GIS can tell us things like:

- Who owns land parcels
- Percentage canopy cover
- Poverty rate in an area
- Prevalence of asthma
- Soil type
- Flood zone
- Demographic data
- ...and more

Cross-sector integration



CLIMATE-SMART CITIES: NEW YORK CITY
Risk of Coastal Flooding, Critical Infrastructure, Social Vulnerability and Green Infrastructure Sustainability Indicators Assessment
Model Criteria
February 11, 2015

Goal	Criteria	Criteria Weights	Data Prioritization (scale: 0-5)	Methodology	Data (Description, Date)	Data Source
Risk of Coastal Flooding						
	Current Flood Zones	25%	100-Year Zone = 5 500-Year Zone = 4	This model weighs coastal flooding risk priorities based on 2013 Flood Advisory Zones developed by FEMA. The Flood Advisory Zones take into consideration a combination storm surge, wave setup, and overland wave run-up.	2013 Flood Advisory Zones	Federal Emergency Management Agency (FEMA)
	2050 New Flood Zone Areas	10%	100-Year Zone = 5 500-Year Zone = 4			
	2050 New Flood Zone Areas	10%	100-Year Zone = 5 500-Year Zone = 4			

DRAFT

This map identifies high priority areas for strategic green infrastructure park investment that would help address stormwater challenges, connect and expand walk/bike corridors, and mitigate elevated urban temperatures, all with a focus on the people most at risk to these impacts.

This map was created using a weighted overlay analysis based on the following goals:

- Equity
- Health
- Connect
- Cool
- Absorb & Protect

Overall Priorities

- High
- Moderate to high
- Moderate
- Study Area
- Priority lands already under protection
- Parks and open space
- County boundary

Overall Priorities
CLIMATE-SMART CITIES: SMART GROWTH FOR DALLAS

July 14, 2016. Special thanks to the following data providers: US Census, the Geospatial Council, National Geographic, City of Dallas, Smart Growth Transportation, Dallas Area Rapid Transit, Nature Conservancy, Service of Science & Public Policy, FEMA, Texas Trees Foundation, Copyright © The Trust for Public Land. The Trust for Public Land and the Trust for Public Land logo are federally registered marks of The Trust for Public Land and information on this map is provided for purposes of discussion and evaluation only. [www.tpl.org](#)

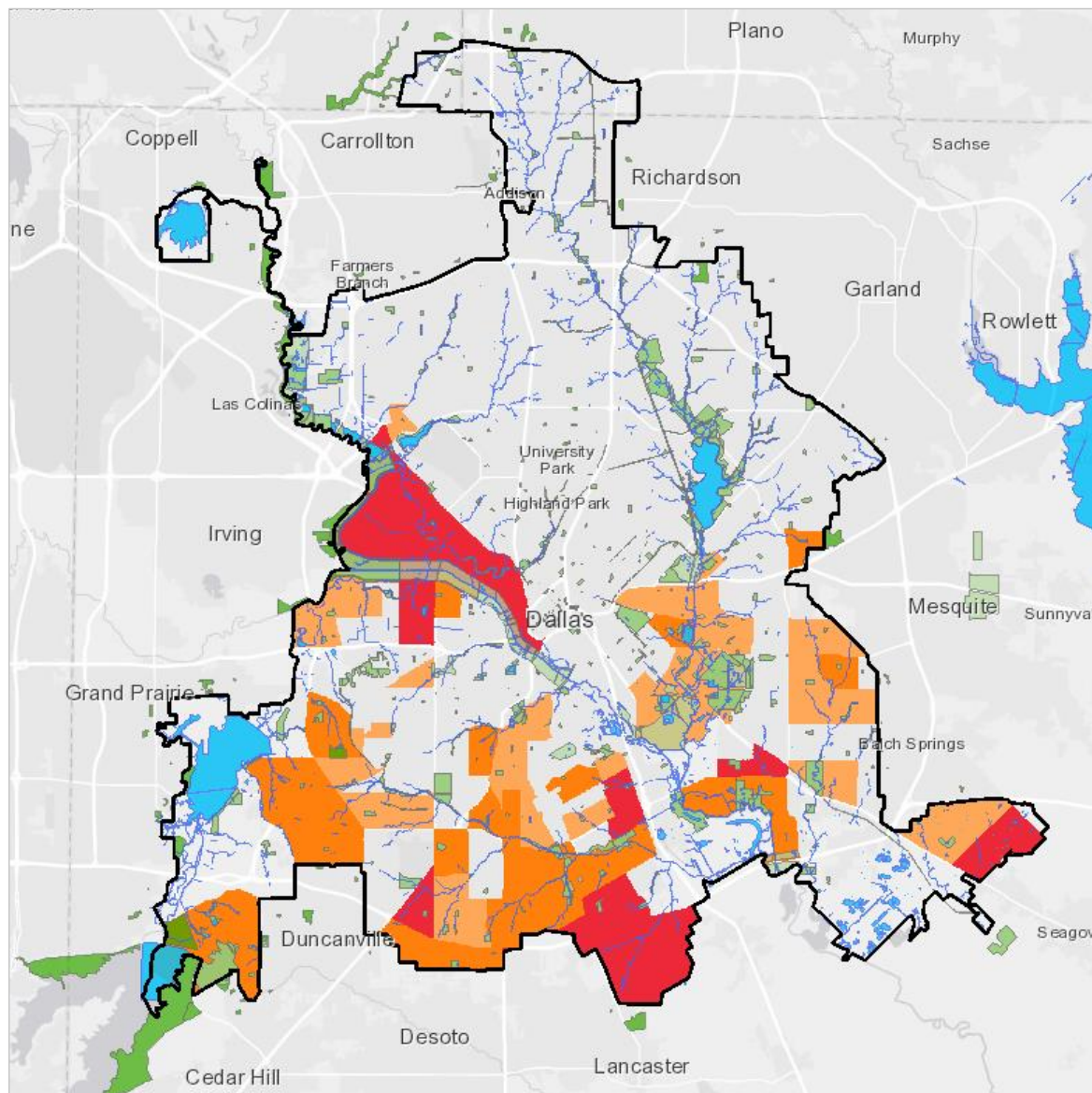
bc playdallas Park & Recreation

TEXAS TREES FOUNDATION
CREATING HEALTHY ENVIRONMENTS

THE TRUST FOR PUBLIC LAND

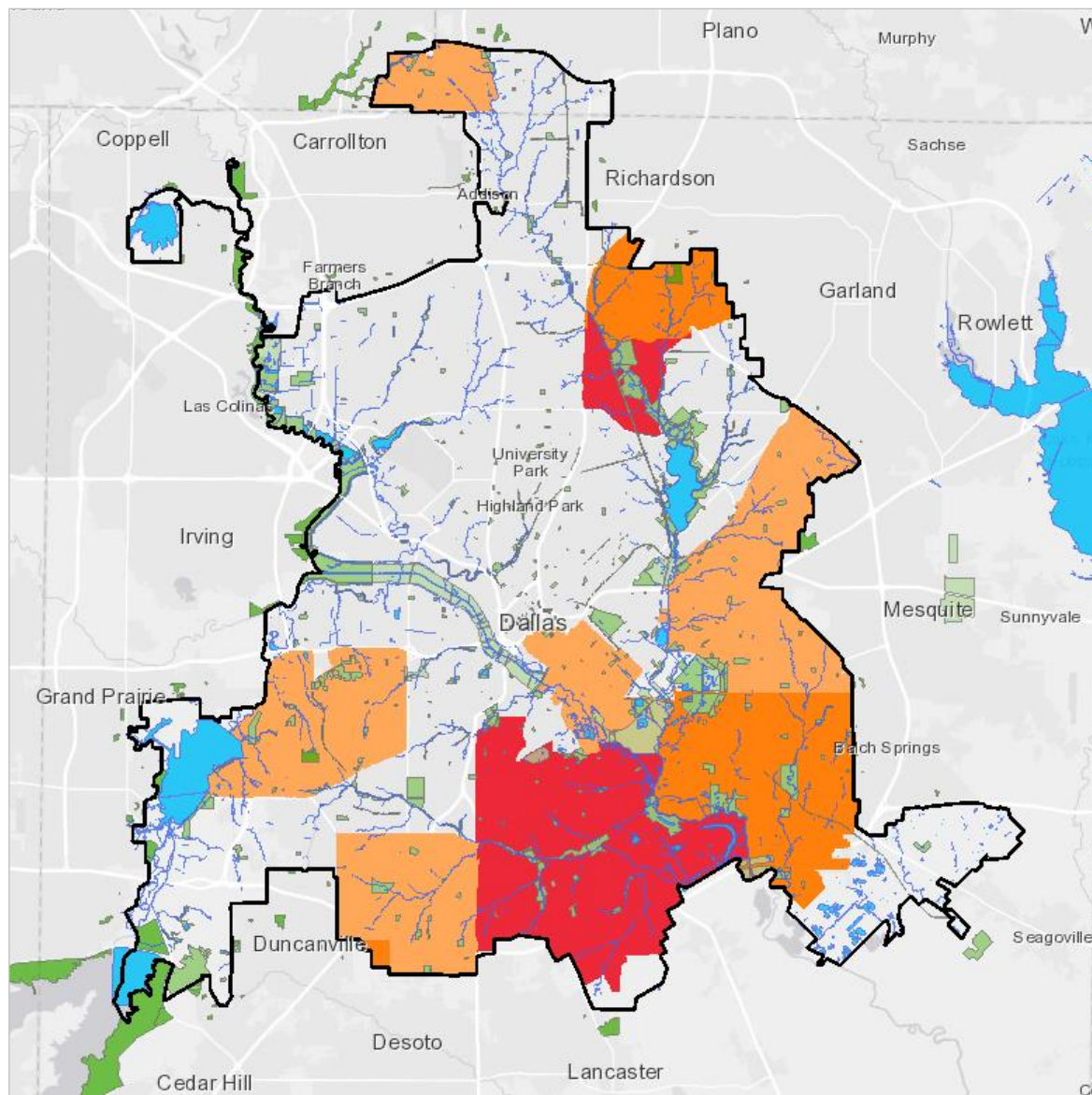
Our Partnership with DFW Hospital Council

- Data sharing agreement
- Census tract level data:
 - Pediatric Asthma
 - Diabetes
 - Cardiovascular disease – heart disease
 - Cardiovascular disease – stroke
 - Obesity
 - Depression & Anxiety



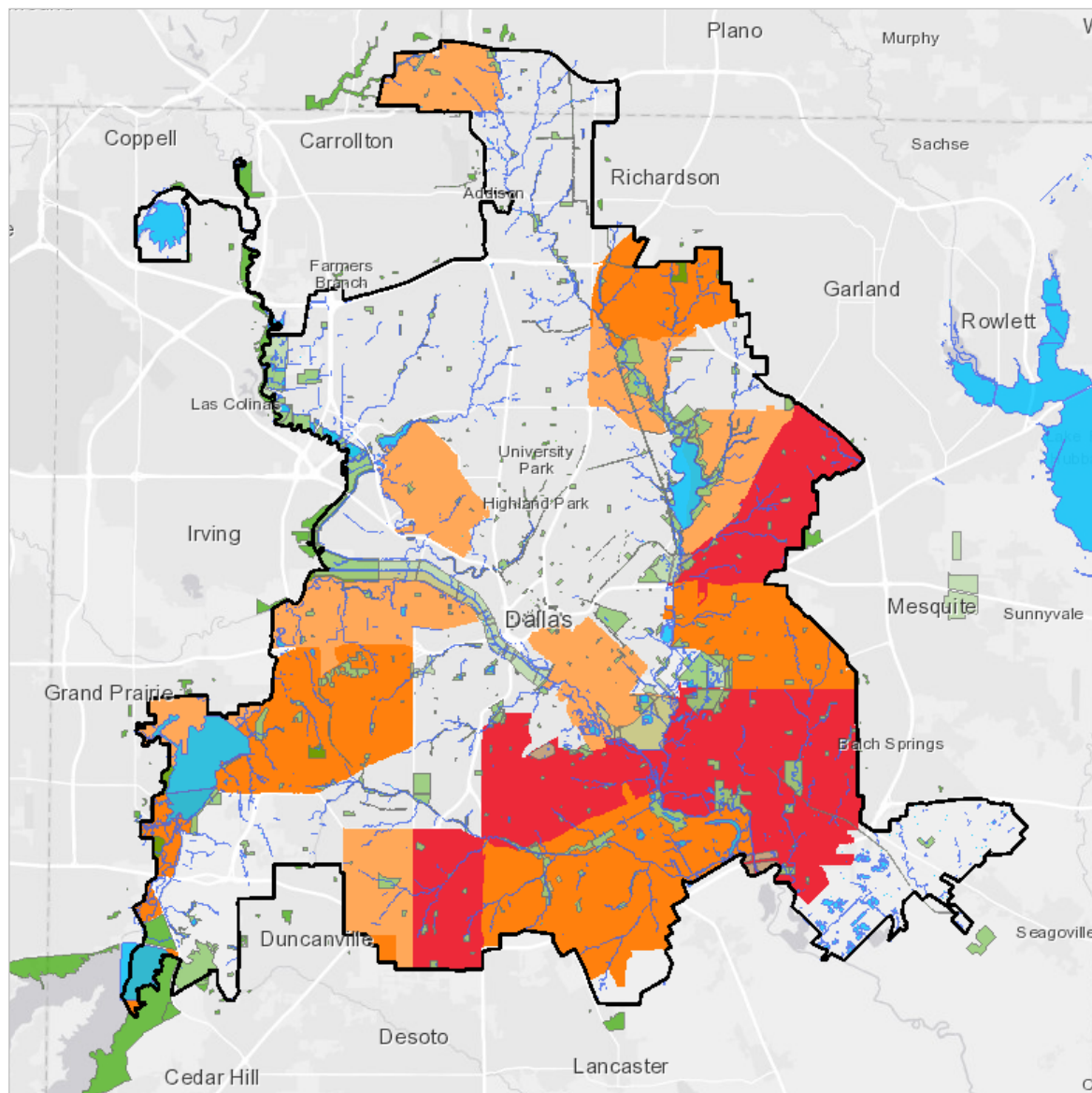
Layer 1: Identify
areas of Dallas
with high
incidents of
pediatric asthma

Objective: Parks and Trails to Improve Public Health of Communities



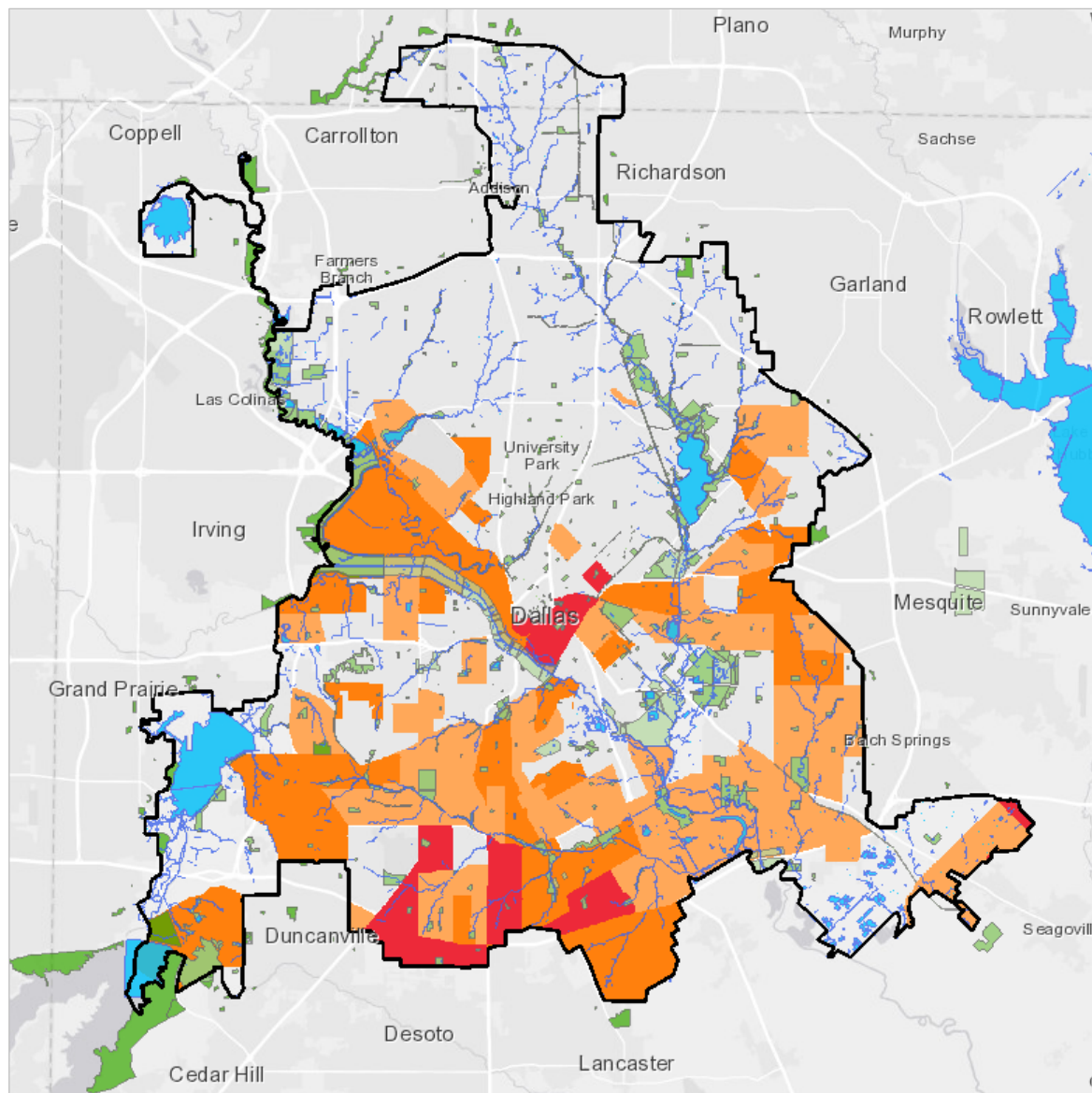
Layer 2: Identify areas of Dallas with high incidents of *adult asthma*

Objective: Parks and Trails to Improve Public Health of Communities



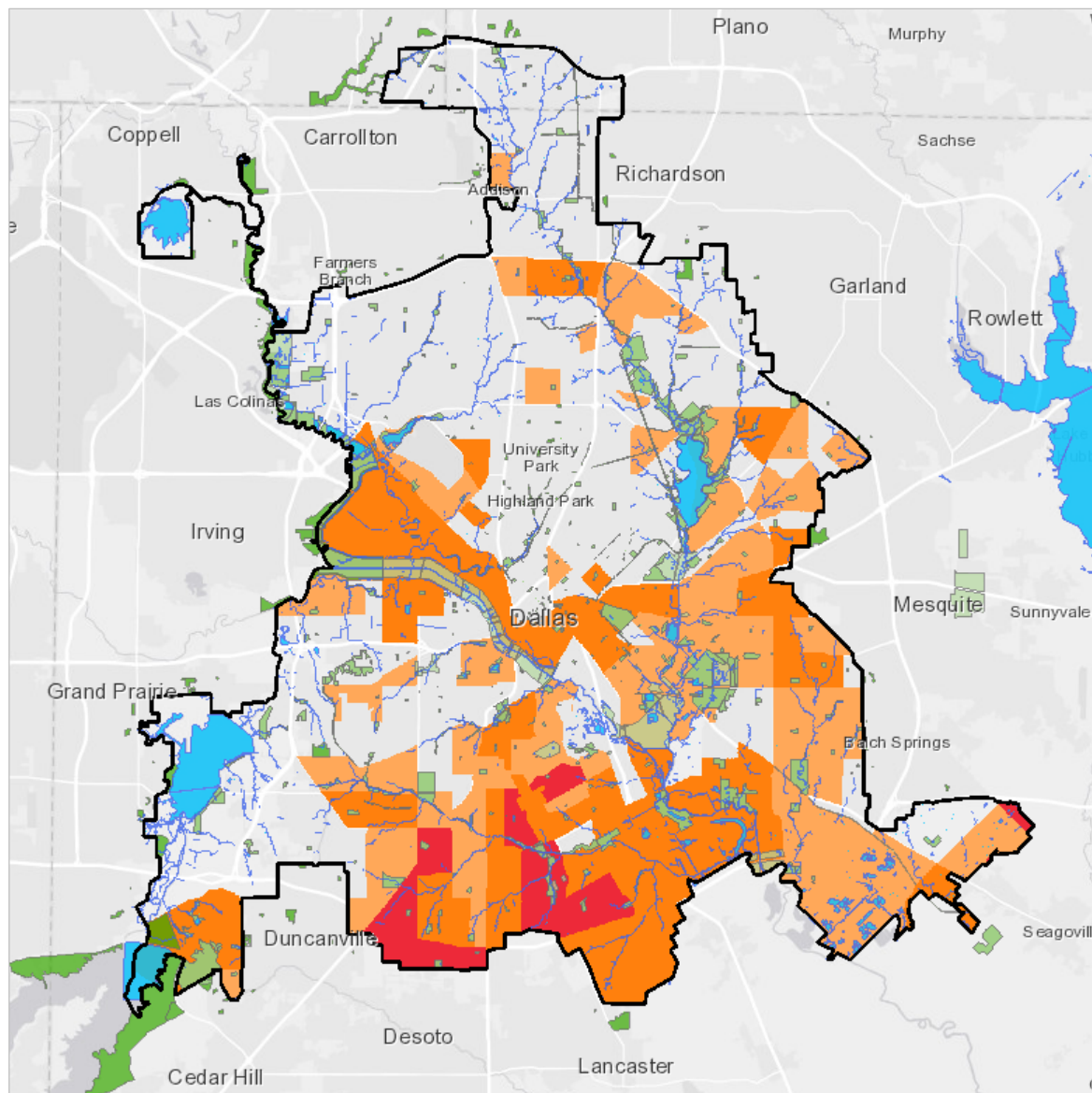
Layer 3: Identify
areas of Dallas
with high
incidents of
*chronic
obstructive
pulmonary
disease*

Objective: Parks and Trails to Improve Public Health of Communities



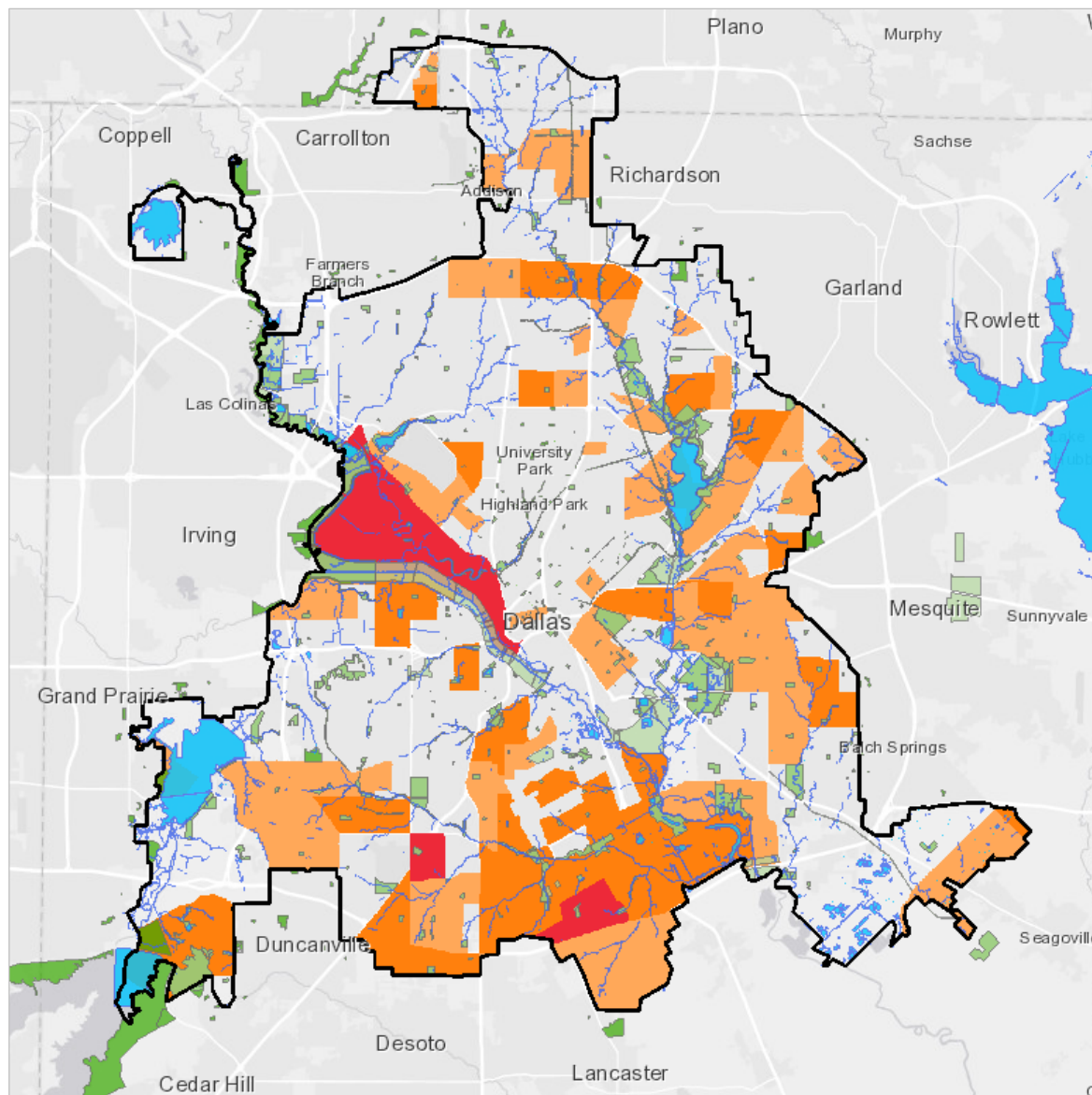
Layer 4: Identify
areas of Dallas
with high
incidents of
diabetes

Objective: Parks and Trails to Improve Public Health of Communities



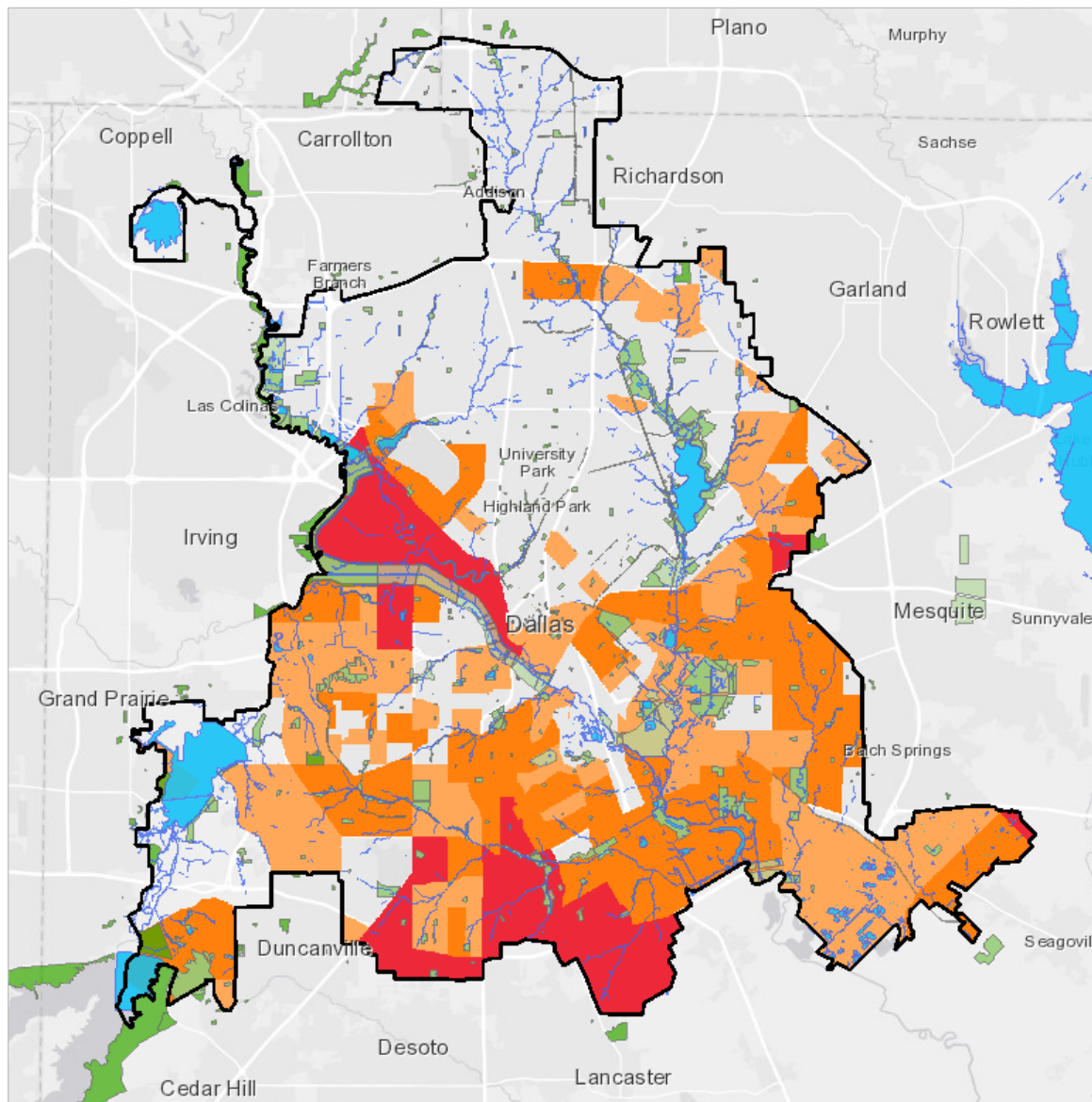
Layer 5: Identify areas of Dallas with high incidents of *cardiovascular disease – heart disease*

Objective: Parks and Trails to Improve Public Health of Communities



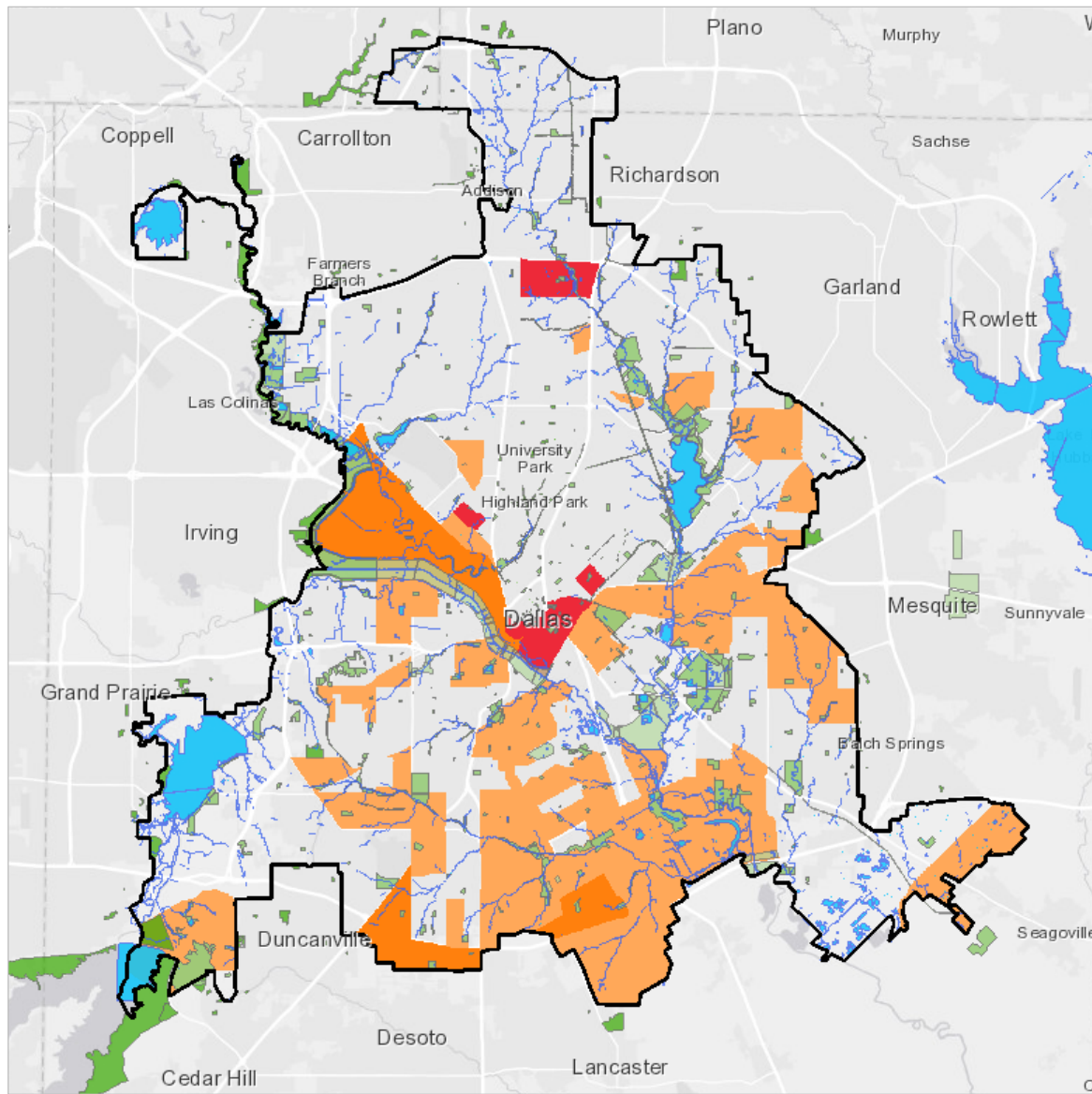
Layer 6: Identify areas of Dallas with high incidents of *cardiovascular disease - stroke*

Objective: Parks and Trails to Improve Public Health of Communities



Layer 7: Identify
areas of Dallas
with high
incidents of
Obesity

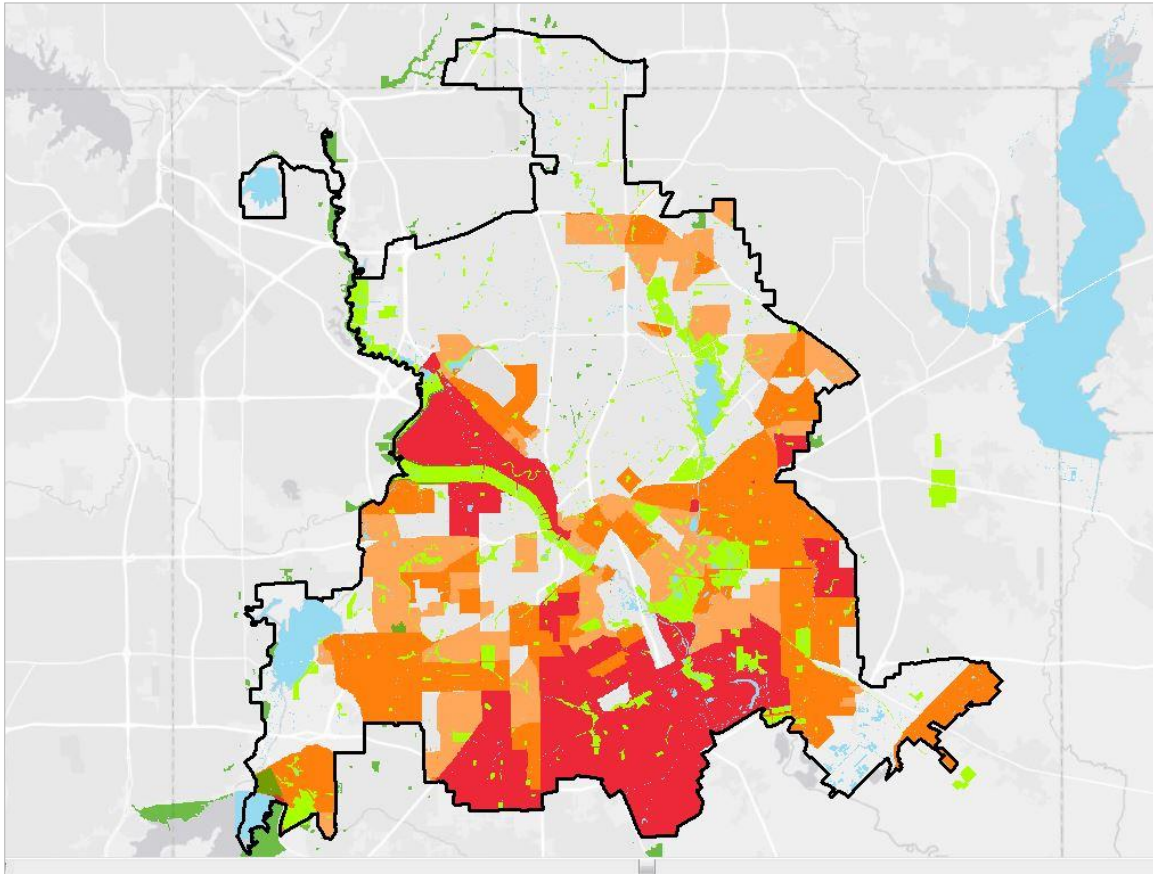
Objective: Parks and Trails to Improve Public Health of Communities



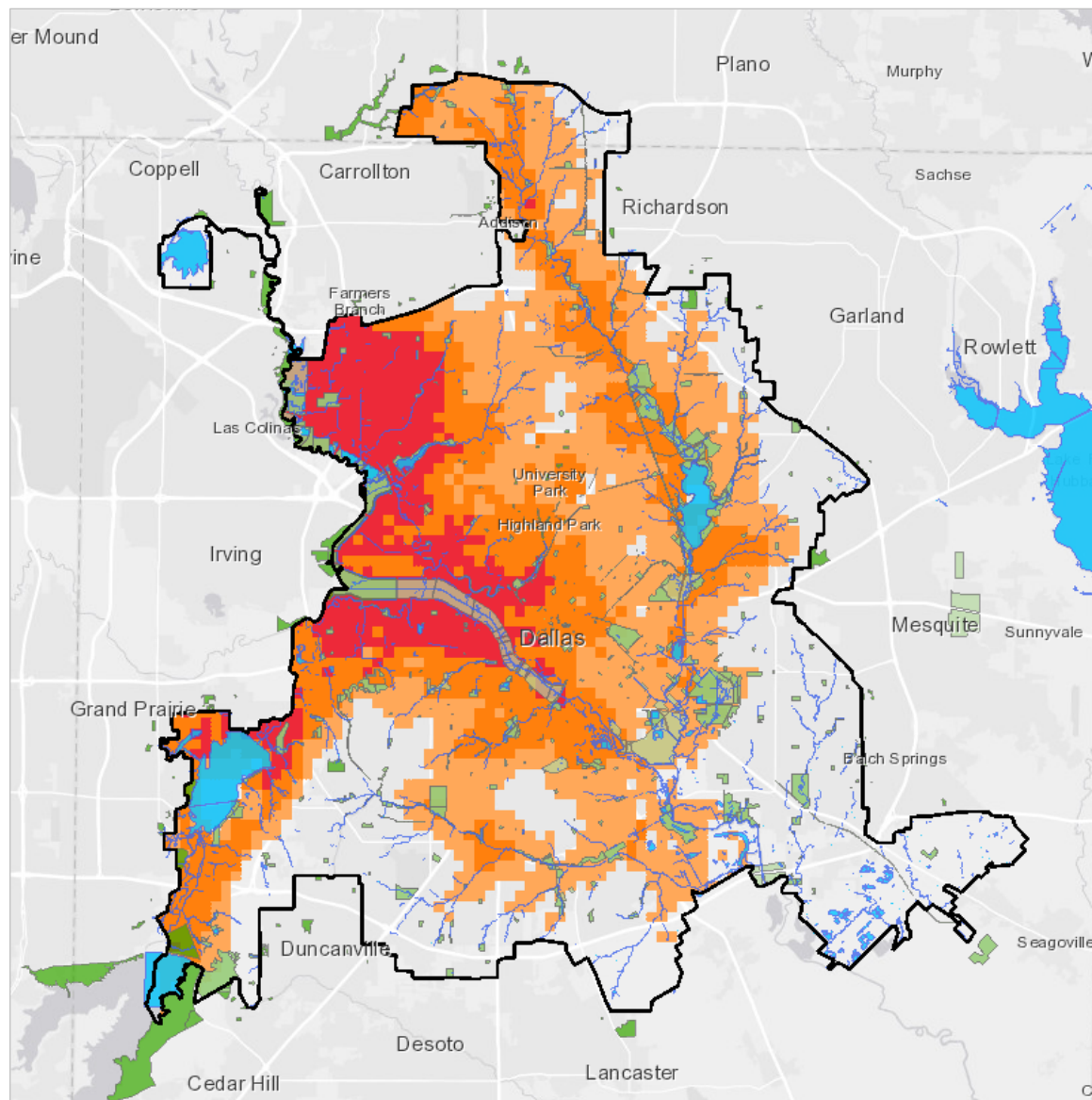
Layer 8: Identify
areas of Dallas
with high
incidents of
*Depression &
Anxiety*

Objective: Parks and Trails to Improve Public Health of Communities

**Layer 9: Identify
areas of Dallas
with high
incidents of
*Stacked Result***

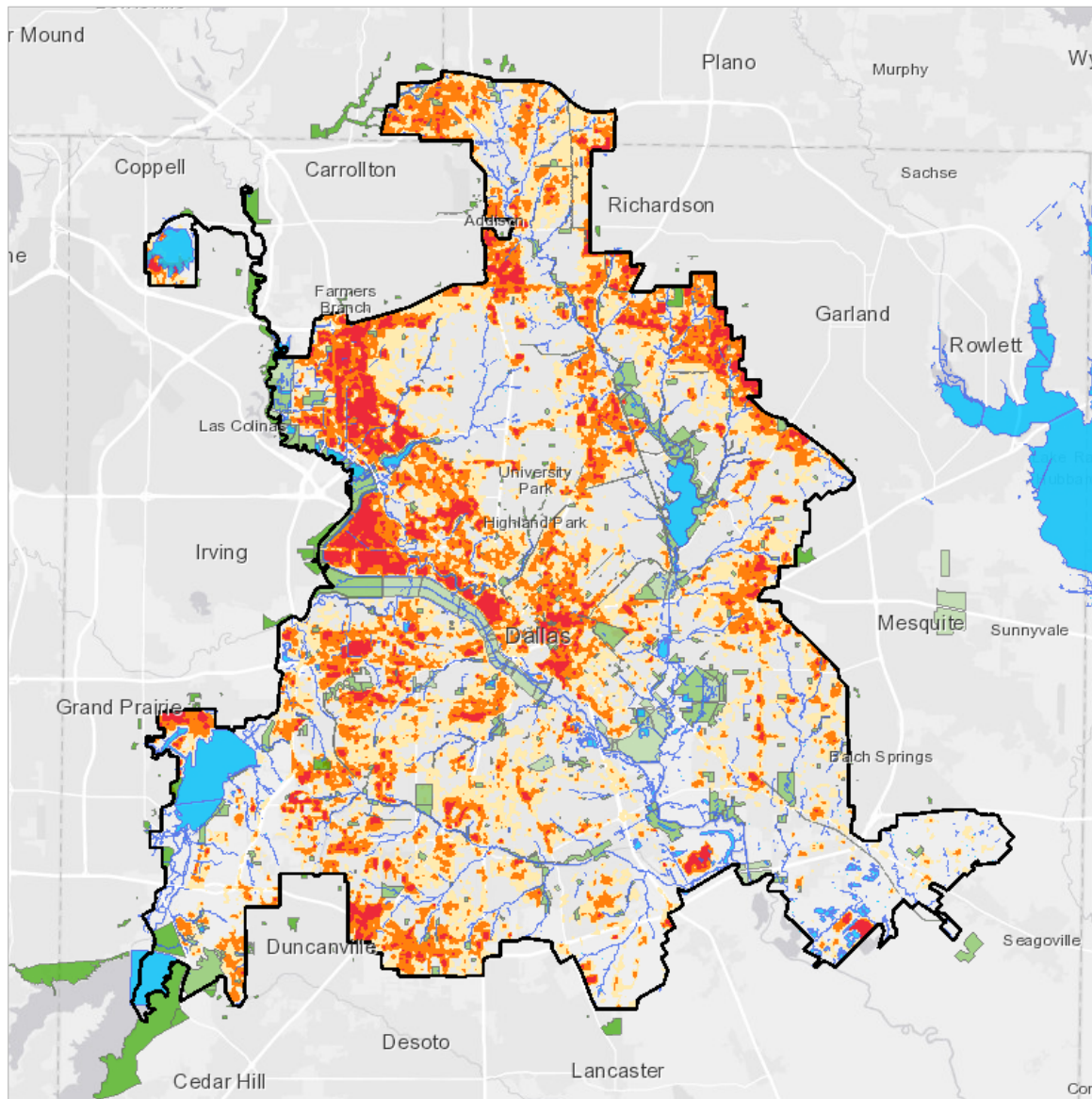


**Objective: Parks and Trails to Improve Public Health of
Communities**



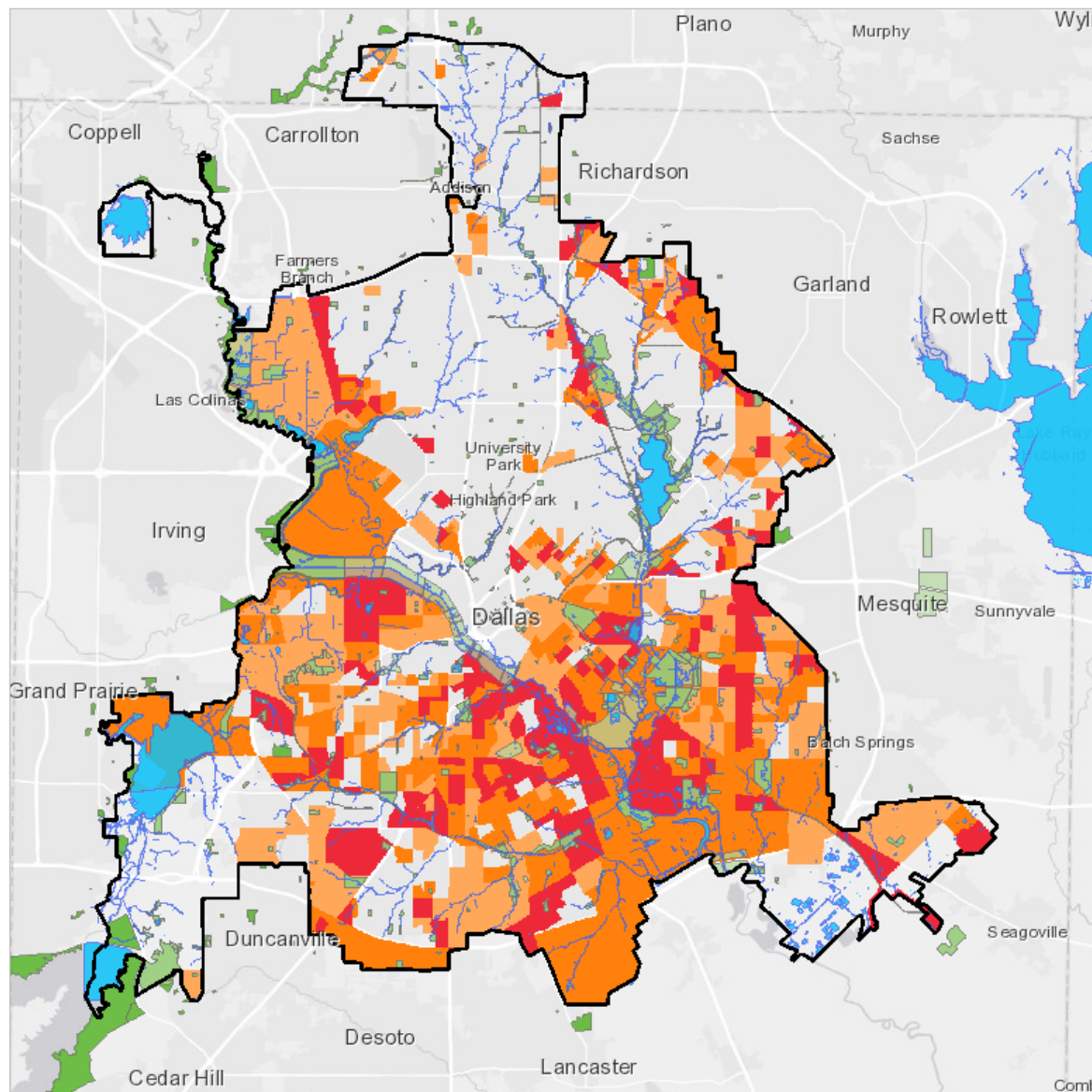
Layer 1: Identify areas of Dallas with high incidents of *Urban Heat Island - Ambient Air Temperature*

Objective: Parks and Trails to Improve Urban Heat Island in Communities



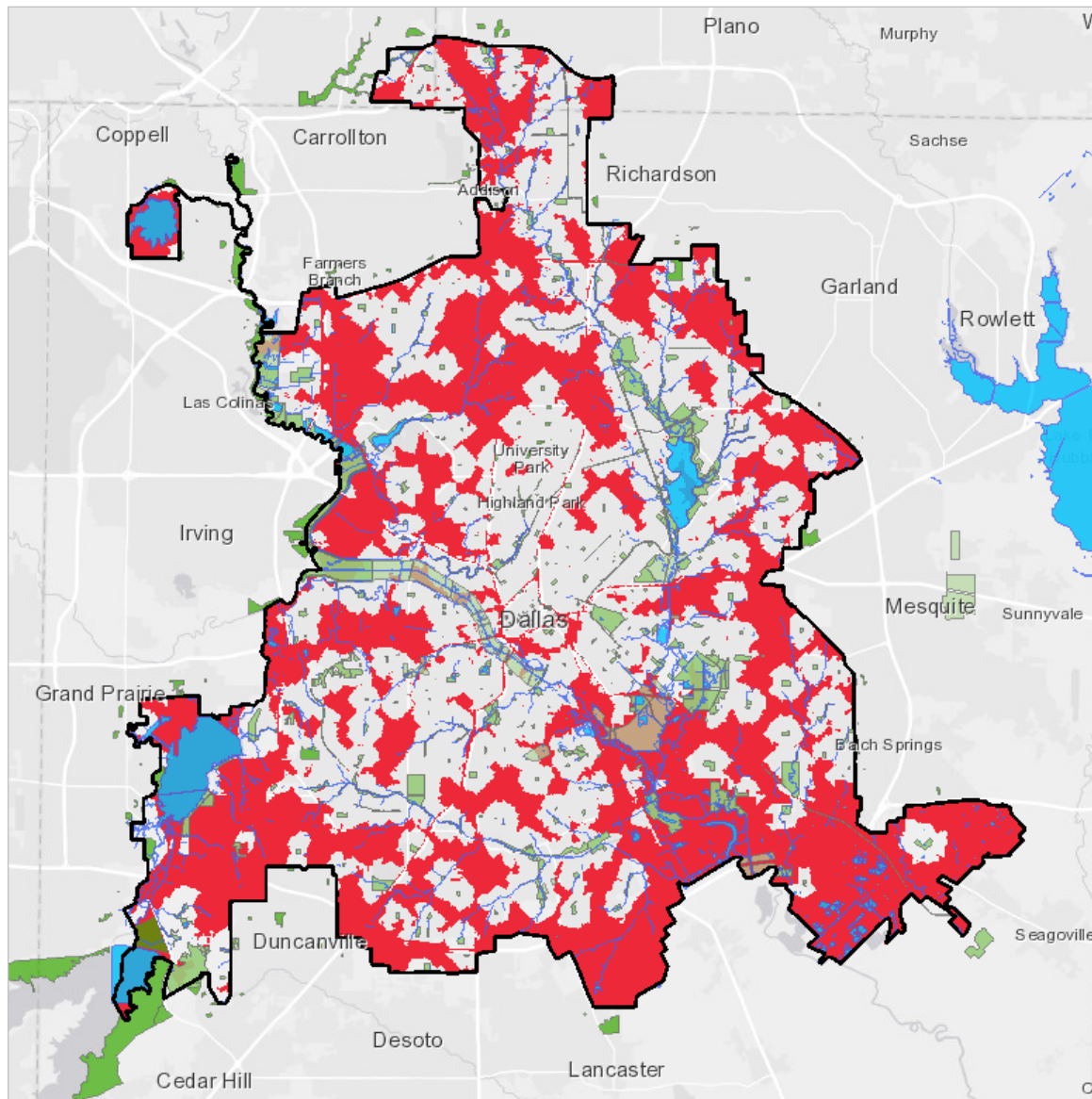
Layer 1: Identify areas of Dallas with high incidents of *Urban Heat Island – Surface Temperature*

Objective: Parks and Trails to Improve Urban Heat Island in Communities



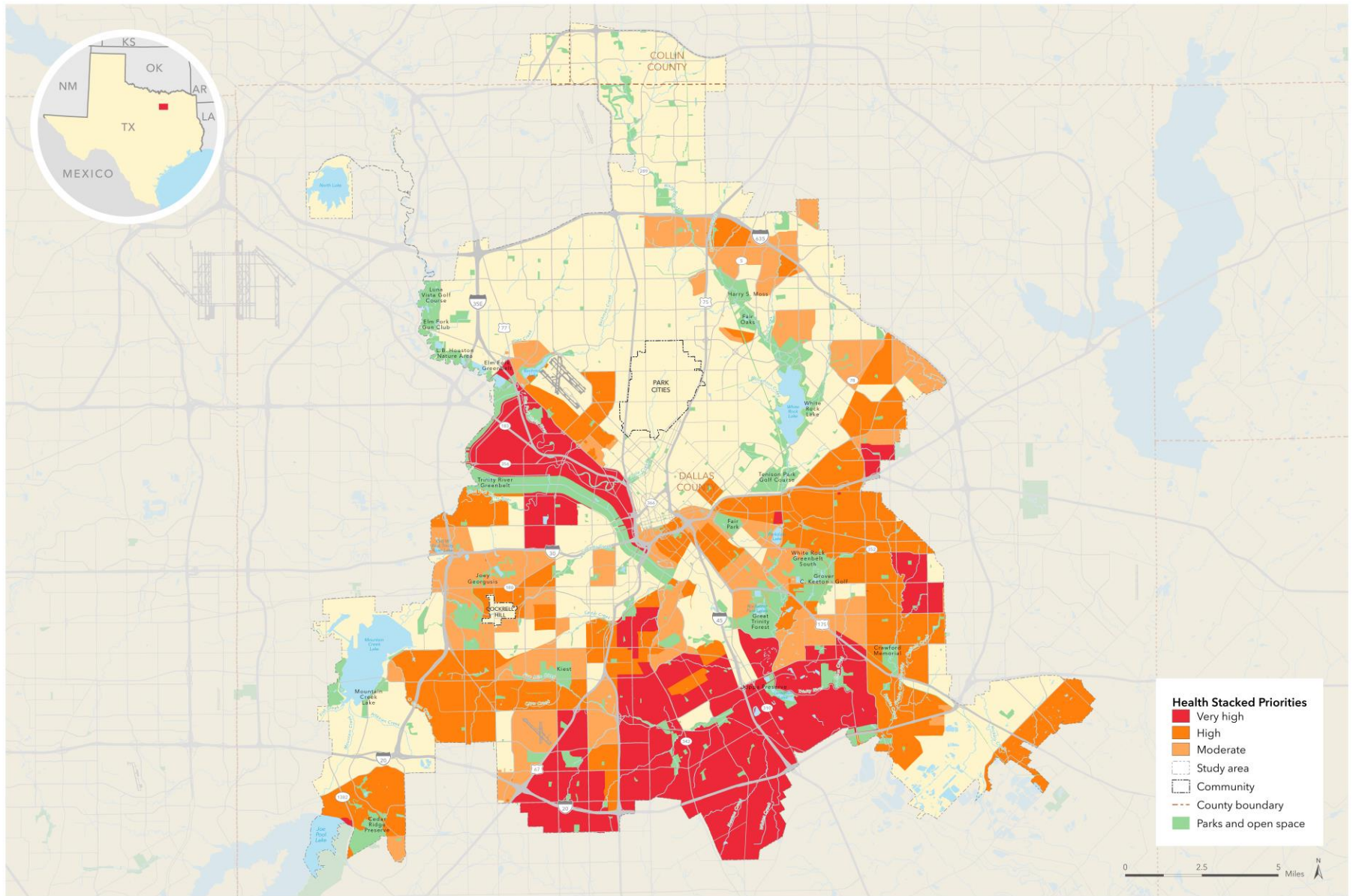
Layer 1: Identify areas of Dallas with high incidents of *Low Income Households*

Objective: Parks and Trails to Address Equity in the City



Layer 2: Identify
areas of Dallas
with high
incidents of *Park*
Deserts

Objective: Parks and Trails to Address Equity in the City



Health Stacked Priorities

SMART GROWTH FOR DALLAS

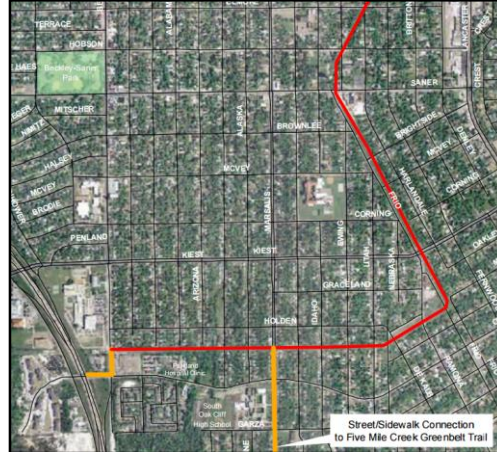
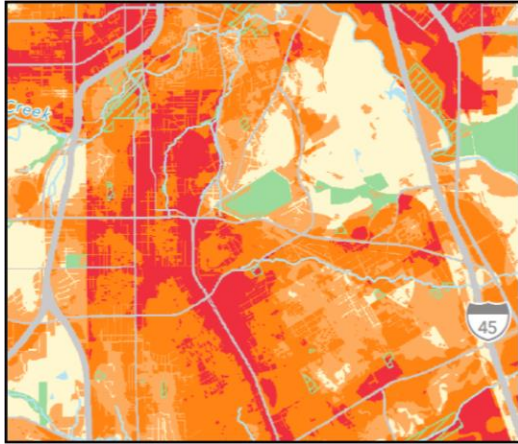
September 21, 2018. Copyright © The Trust for Public Land. The Trust for Public Land and The Trust for Public Land logo are federally registered marks of The Trust for Public Land. Information on this map is provided for purposes of discussion and visualization only. www.tpl.org

WWW.WEB.TPLGIS.ORG/DALLAS_SMARTGROWTH



WHAT CAN WE DO
WITH ALL THIS DATA?

Cool and Connected Oak Cliff



- Partnership between TPL, TNC, and the Texas Trees Foundation
- Working in Denver, Boston, and Dallas
- Funded by JPB Foundation
- Dallas activities:
 - Partnership with Texas Trees Foundation
 - Planting trees at four DISD campuses
 - Playground enhancements
 - Joint-use agreements

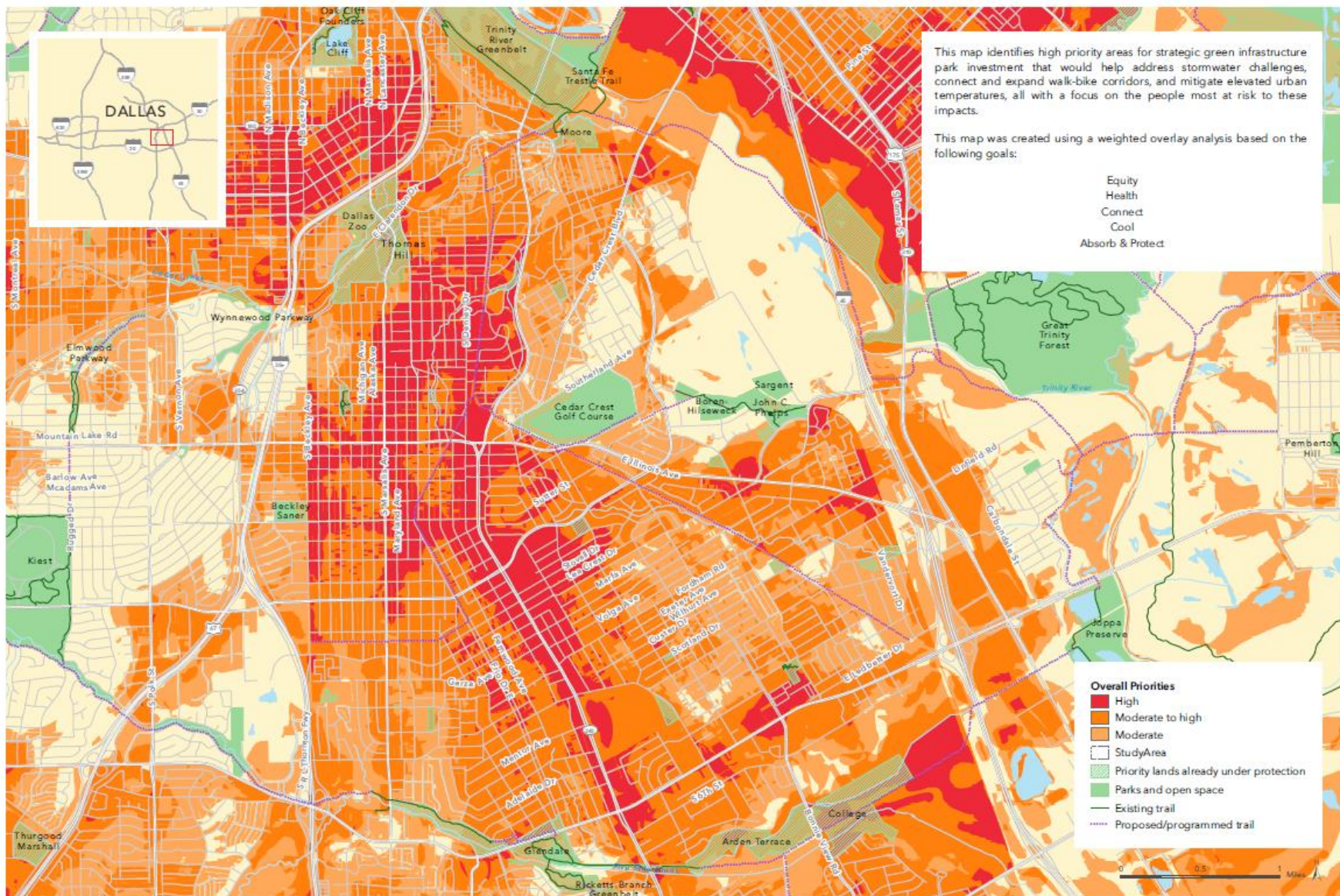


TEXAS TREES
FOUNDATION

The Nature
Conservancy



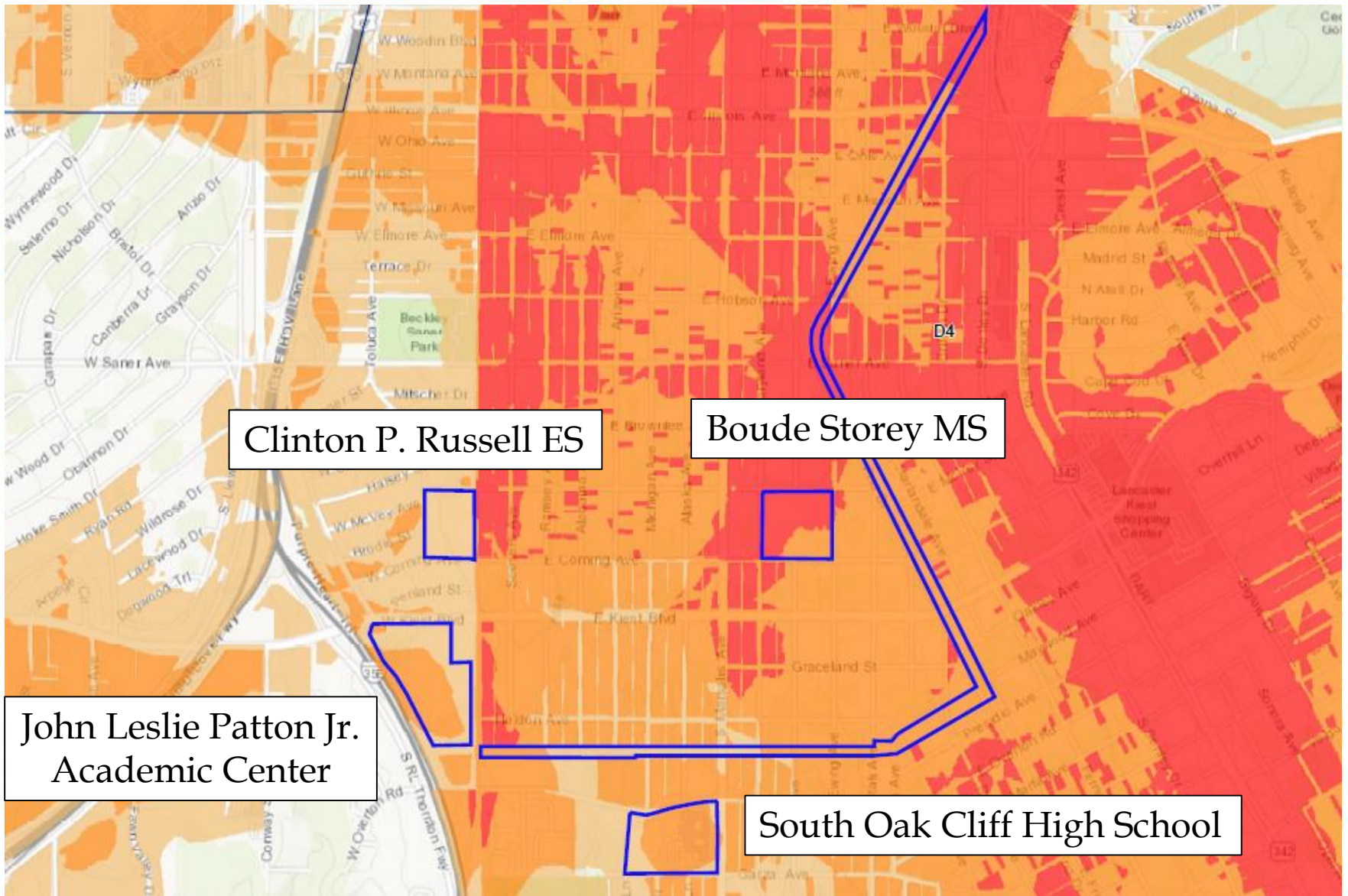
THE
TRUST
FOR
PUBLIC
LAND



Overall Priorities

CLIMATE-SMART CITIES™: SMART GROWTH FOR DALLAS - CEDAR CREST AREA

June 27, 2017. Special thanks to the following data providers: City of Dallas Parks and Rec, Texas Crash Report Information System 2010-2015 - Texas Dept. of Transportation, Dallas Area Rapid Transit. Copyright © The Trust for Public Land. The Trust for Public Land and The Trust for Public Land logo are federally registered marks of The Trust for Public Land. Information on this map is provided for purposes of discussion and visualization only. www.tpl.org



Overall Priorities

CLIMATE-SMART CITIES™: SMART GROWTH FOR DALLAS - CEDAR CREST AREA

June 27, 2017. Special thanks to the following data providers: City of Dallas Parks and Rec, Texas Crash Report Information System 2010-2015 - Texas Dept. of Transportation, Dallas Area Rapid Transit. Copyright © The Trust for Public Land. The Trust for Public Land logo are federally registered marks of The Trust for Public Land. Information on this map is provided for purposes of discussion and visualization only. www.tpl.org

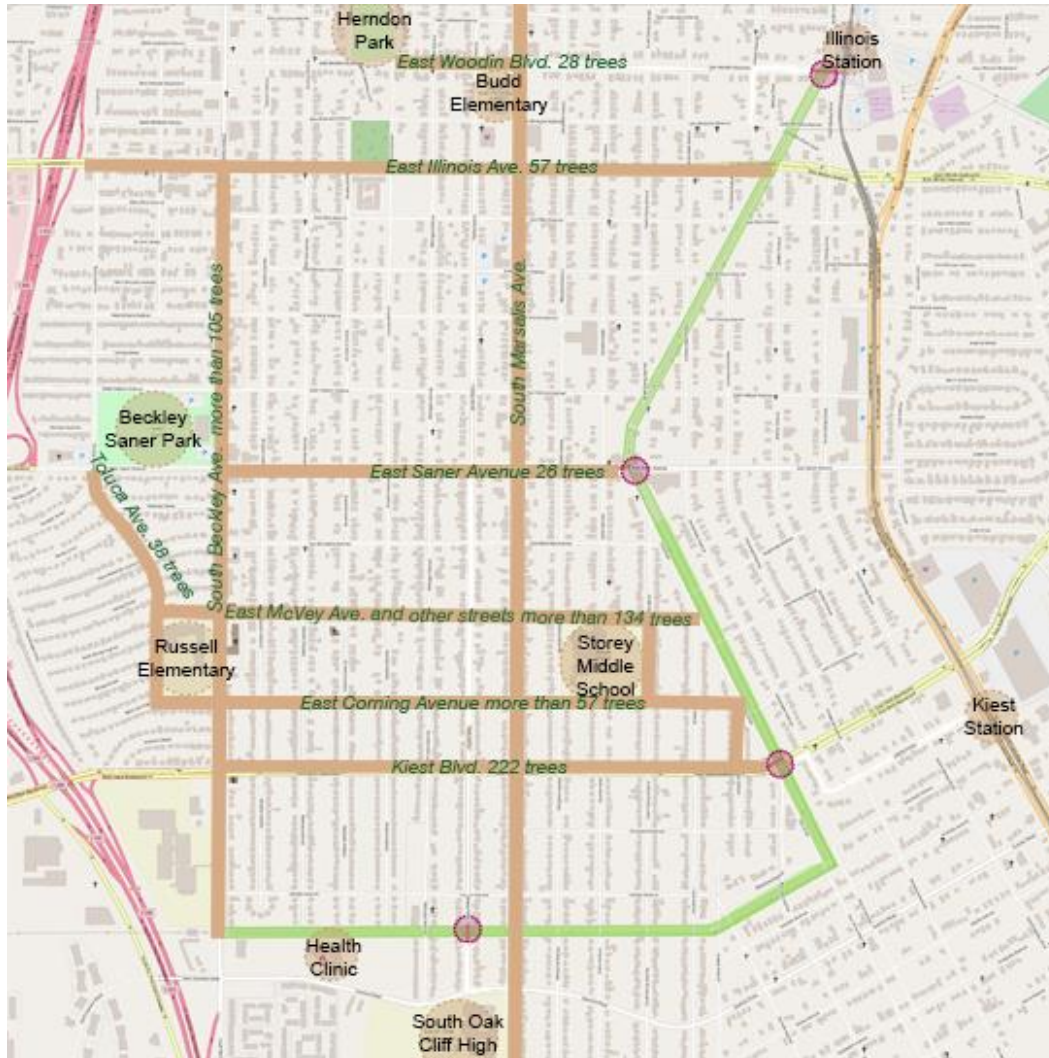
Texas Trees Foundation: “Cool Schools”



Program Objectives

- Create a “cool” outdoor learning center
- Educate staff and children about the importance of trees
- Promote “hands on” learning
- Provide schools with an individualized landscape plan

Planting Trees to Improve Connectivity



Planting Trees to Improve Connectivity



Thank you!

Molly Plummer

North Texas Program Manager

molly.plummer@tpl.org

214-433-1361