



The Dallas-Fort Worth Hospital Council Foundation is your health headquarters. From patient safety to diabetes prevention, our work serves your children, your family and your community.

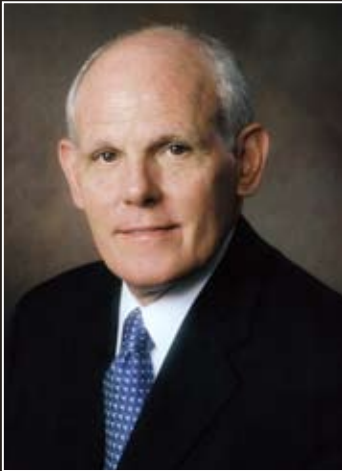


2010-2011 ANNUAL REVIEW

www.dfwhcfoundation.org



DEAR FRIENDS,



Harvey L. Fishero

LFACHE

Chair, DFWHC Foundation Board



Kristin Jenkins

JD, FACHE

President, DFWHC Foundation



If there is one constant in life, it is change. In 2010 and 2011, the uncertainties of reform and hardship forced healthcare providers, the government and nonprofit organizations to reflect on where we've been and what changes can be seen on the horizon. Nonprofit organizations are under new pressures as they struggle to meet the increased needs of service and to stay abreast of rapid changes in funding and government regulations.

Like our business friends, the Dallas-Fort Worth Hospital Council (DFWHC) Foundation has faced tough decisions on how to provide value to the community. Services have been increased and improved. Enhanced research and grant activity has resulted in positive financial performance. Grants from organizations outside of the community have totaled more than \$8 million over the last 18 months. These funds can be used to improve our community's health without additional funding from local healthcare partners.

The DFWHC Foundation's board and staff reaffirmed its core mission and values. It refreshed strategic priorities and streamlined research and grant applications. We hope this will encourage renewed collaboration while expanding community projects and participation. To enhance our communications, we adopted a new brand identity and campaign that reflects the intent of our partners and community – the vibrant growth of vision and effort to continuously improve health within our region.

While we face a long road to economic recovery and reform, we are pleased to share good news in this annual review. We invite you to read the following pages detailing the DFWHC Foundation's efforts. Without all of us working together, these accomplishments could not have occurred. Our work over the past 12 months has inspired us to continue with our vision, reinforcing our dedicated commitment to help our residents live healthy lives. With sincere gratitude for all that you do and the opportunity to work together,

Harvey L. Fishero, LFACHE
Chair, DFWHC Foundation Board of Trustees

Kristin Jenkins, JD, FACHE
President, DFWHC Foundation

TRUSTEES



Dr. Ron Anderson
Parkland Health & Hospital System

Chuck Lyles
Dell Healthcare

Dr. Paul Convery
Baylor Health Care System

Dr. Matthew Murray
Texas Christian University

Ruben Esquivel
UT Southwestern Medical Center

Dr. Elizabeth Poster
UT Arlington College of Nursing

Harvey Fishero
Chair of the Foundation Board

Warren Rutherford
Trustee

Dr. Kathleen Forbes
UNT Health Science Center

Dr. Merlyn Sayers
Carter Bloodcare

W. Stephen Love
DFWHC

Pam Stoyanoff
Methodist Health System



Dr. Ron Anderson



Dr. Paul Convery



Ruben Esquivel



Harvey Fishero



Dr. Kathleen Forbes



W. Stephen Love



Chuck Lyles



Dr. Matthew Murray



Dr. Elizabeth Poster



Warren Rutherford



Dr. Merlyn Sayers



Pam Stoyanoff

PARTNERS



Arlington Chamber
Baylor All Saints MC - FW & SW
Baylor Health Care System
Baylor Institute for Rehabilitation
Baylor Jack/Jane Hamilton Heart/Vascular Hospital
Baylor Medical Center at Garland
Baylor Medical Center at Irving
Baylor MC at Waxahachie
Baylor Regional MC at Grapevine
Baylor Regional MC at Plano
Baylor Specialty Health Centers
Baylor U. - Louise Herrington School of Nursing
Baylor University Medical Center
Blue Cross Blue Shield
Brookhaven College
Centennial Medical Center
Center for Community Health - UNT
Children's Medical Center
Collin County Community College
Cook Children's Health Care System
Dallas County Medical Society
Dallas County Public Health Department
Dallas Regional Medical Center
Denton Regional Medical Center
Dept. Clinical Sciences - UTSW Medical Center
DFW AHEC
El Centro College
Grayson County College
Green Oaks Hospital
HCA North Texas Division
Health Industry Council
Healthy Tarrant County
Institute for Urban Policy Research - UTD
JPS Health Network
Las Colinas Medical Center
Medical Center of Arlington
Medical Center of Lewisville
Medical Center of McKinney
Medical Center of Plano
Medical City Dallas Hospital
Methodist Charlton Medical Center
Methodist Dallas Medical Center

Methodist Health System
Methodist Mansfield Medical Center
Methodist Richardson Medical Center
Navarro Community College
North Central Texas College
North Hills Hospital
Office Health Equity - Baylor Healthcare
Our Children's at Baylor
Parkland Health & Hospital System
Plaza Medical Center of Fort Worth
School of Health Professions - UTSW
Southwestern Adventist University
Tarleton State University
Tarrant County Community College
Tarrant County Medical Society
Tarrant County Public Health
Tenet Healthcare Corporation
Texas Christian University
Texas Health Arlington Memorial Hospital
Texas Health Harris Methodist HEB
Texas Health Harris Methodist Hosp. Cleburne
Texas Health Harris Methodist Hosp. Fort Worth
Texas Health Harris Methodist Hosp. SW FW
Texas Health Harris Methodist Hosp. Stephenville
Texas Health Presbyterian Hospital Allen
Texas Health Presbyterian Hospital Dallas
Texas Health Presbyterian Hospital Denton
Texas Health Presbyterian Hospital Kaufman
Texas Health Presbyterian Hospital Plano
Texas Health Resources
Texas Woman's University
The Heart Hospital Baylor Plano
Trinity Valley Community College
United Way of Metropolitan Dallas
United Way of Tarrant County
University of Texas at Arlington
UT Arlington College of Nursing
UT Southwestern Medical Center
VA North Texas Health Care System
Weatherford College



DEPARTMENTS



Community Health

Health programs,
action planning and
partnerships

Workforce

Staff recruitment,
retention, education and
student scholarships

Research

Daily health care
research, hospital
collaboration and grants

Data

Data quality, timely
information and data
enhancement





**Community
Health**

Workforce

Data

Research





Community Health Website enlightens

UNDERSTANDING THE HEALTH NEEDS OF NORTH TEXAS IS CRITICAL WHEN IMPROVING THE QUALITY OF LIFE.

For years, the Dallas-Fort Worth region did not have a single, easily accessible source of comprehensive local health data. As a result, the DFWHC Foundation launched the website Healthy North Texas (www.healthyntexas.org) to provide an interactive tool to enhance the capacity of local residents to improve the health of North Texans. The website is not only an extraordinary data warehouse, but it connects people with resources and inspires community collaboration.

Thanks to the development of the Community Health Collaborative, a partnership of local experts supporting the DFWHC Foundation, the website was designed and implemented. The Collaborative has worked diligently to increase health awareness while creating a valuable opportunity for local residents to dial-up health data to reveal multiple community health issues.

"The Healthy North Texas website is the most comprehensive health information sharing effort ever contemplated by North Texas," said David



Tesmer, senior vice president of Texas Health Resources and past chair of the Collaborative. "Sharing this information between hospitals, policy makers, insurance companies and the public will bring a level of transparency and accountability for the benefit of all."

Healthy North Texas provides easy-to-understand health meters, combining information from local, state and national health centers. It also includes a library of best practices in disease prevention.

"This website is an innovative program that will have a positive effect on local patients," said Michael Darrouzet, president of the Dallas Medical Society. "It has the ability to recognize community health goals and measure success. It's a great way to share information between hospitals and patients."

Hundreds of healthcare professionals meet to hear cutting edge patient safety procedures. The DFWHC Foundation's Community Health Department provides first-class educational opportunities allowing your nurses, doctors and healthcare professionals to provide the highest quality of care.

WORKFORCE

Retention, education and scholarships

REX MCRAE SCHOLARSHIP

In 2011, the DFWHC Foundation Workforce Center awarded its annual Rex McRae Scholarship to Sarah Cook, nursing student at the Brookhaven College School of Nursing. The scholarship was presented during the April 26 Employee of the Year Luncheon at the Irving Convention Center. The award was created in 1998 to assist local nursing students in financial need pursuing healthcare careers. To date, more than \$15,000 has been distributed to nursing students attending North Texas colleges and universities.

EMPLOYEE OF THE YEAR LUNCHEON

Each year the Workforce Center acknowledges dedicated North Texas hospital employees with the Employee of the Year Luncheon. In 2011, the event was held for the 15th straight year. Forty-eight hospital nominees were introduced at the event, with 11 recipients announced. The luncheon was created as an opportunity to provide recognition to non-management hospital employees so important in the everyday function of a health care institution. The Workforce Center believes recognition provides



employee retention, a crucial element to a successful hospital team. More than 75 North Texas hospital employees from all departments have been honored since the event's creation.

NURSING EDUCATION PROGRAM

Working with North Texas hospitals, the Workforce Center has brought to the region the education program "Grow Your Own Nurse." Hospital employees enroll in local nursing programs and attend on-site classes at their hospitals. Upon successful completion, the student/employee can take their board certification and become a nurse. Oftentimes, students completing the program started in health care as an administrative assistant or patient care technician. This program has assisted many employees in obtaining a first-time college degree.

150+

COLLABORATIVE PARTNERS

1,000+

STUDENTS TRAINED

4 MILLION

IN GRANTS

There is a shortage of nurses in North Texas hospitals. The DFWHC Foundation Workforce Center has developed programs linking nurses and hospitals to fill these shortage areas. These programs increase the number and quality of nurses in each hospital, providing patients with better care.

Data action

COLLABORATING WITH NORTH TEXAS HOSPITALS, THE DFWHC FOUNDATION DATA CENTER HAS BEEN ABLE TO BUILD ONE OF THE MOST COMPREHENSIVE REGIONAL DATABASES IN THE COUNTRY.

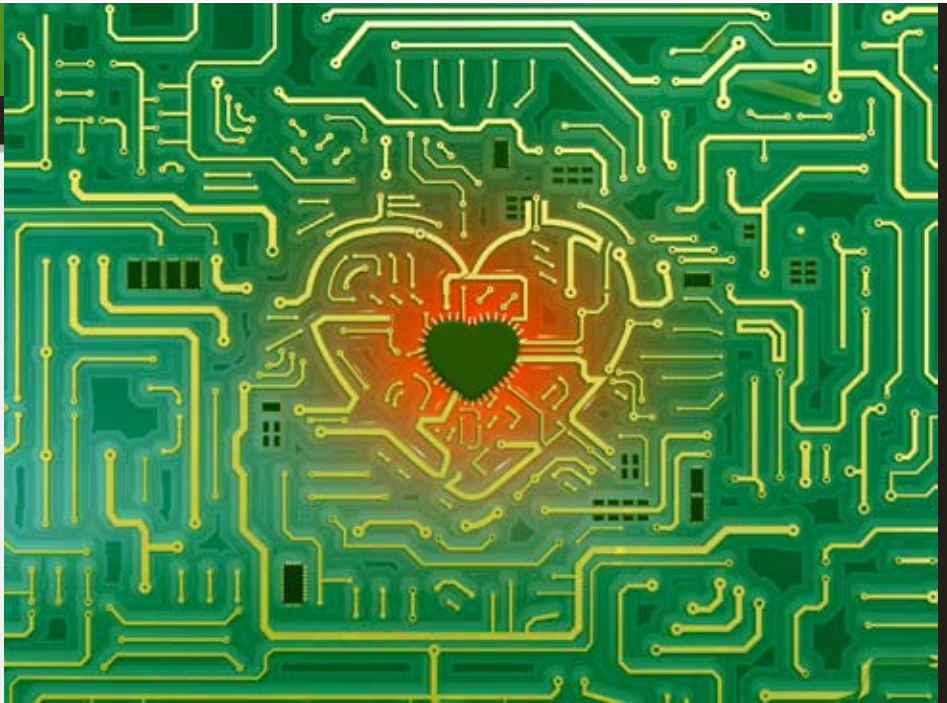
Through the power of business intelligence tools, the Data Center helps hospitals transform data into improved health care. Parkland Health and Hospital System is one of the many institutions using the data through the use of Prevention Quality Indicators (PQIs).

One of the ways Parkland uses the data is to analyze PQIs by payer, ethnicity and service area to find opportunities to boost outpatient care. Parkland has been able to use this data warehouse and incorporate the information into productive community action.

Using PQI data, Parkland has been able to adjust

its clinical planning and divide its resources. It has instituted diabetes and education programs. Parkland will also be breaking ground on a new health center site selected in part using PQI data.

"Using data from the DFWHC Foundation Data Center, we can examine admissions for business intelligence, decide on location for new health centers, target area poverty populations for service and examine the impact of changes," said Sue Pickens, director of population medicine at Parkland Health and Hospital System. "This data will continue to play an increasingly crucial role in health care planning and analysis in the North Texas area."



6.8 MILLION

PATIENTS IDENTIFIED SINCE 1998

14

YEARS OF DATA

95%

NORTH TEXAS INPATIENT MARKET

Each day, people enter hospitals across the North Texas region. Through the collaboration of North Texas hospitals, these visits are recorded in a regional data base. The DFWHC Foundation Data Center helps transform this information into knowledge to improve the care patients receive from start to finish.

Abdominal Aortic Aneurysm Surgery

ABDOMINAL AORTIC ANEURYSM (AAA) IS CALLED THE "SILENT KILLER"

because many patients experience no obvious symptoms prior to aneurysm rupture. Incidence and prevalence of this life-threatening condition is increasing as the U.S. population is aging. Studies show more than ever before, many individuals are living with undiagnosed AAA. There are a number of effective medical and surgical interventions to successfully treat the aneurysm. However, studies comparing the long-term outcomes of these treatments have been limited, and little of the available information is population-based.

In the interest of improving patient safety and supporting quality healthcare, the Institute for Health Care Research and Improvement at Baylor Research Institute and DFWHC Foundation Research Department obtained federal funding to develop a North Texas Abdominal Aortic Aneurysm (AAA) surgery registry. The registry can provide quality

assessment for participating hospitals. Data from the registry on the two surgical interventions currently available – endovascular and open surgical repair – will provide information regarding the patterns of use of these operations. Registry data will allow a long-term comparative effectiveness assessment of the two procedures. Results will expand our understanding of factors improving management of AAA and provide valuable information to surgeons and patients making decisions regarding AAA management, thus enhancing medical care.

The Research Department will continue to work with stakeholders, researchers, public health departments and hospitals to improve community health through knowledge dissemination. Past studies have involved venous thromboembolism, diabetes patterns, neighborhood effects on health, congestive heart failure readmissions and suicide prevention.

\$70,875

RESEARCH TO MAP DFW DIABETES

\$50,000

GRANT FROM UNITED WAY

\$500,000

MAPPING OF DISEASE CLUSTERS

Research is being conducted to determine if more people go to the emergency room on days with high pollution. Once pollution's affect on people's health is better understood, the more doctors can help. The DFWHC Foundation Research Department provides the data and researchers to improve community health.



North Texas Regional Extension Center

THE NORTH TEXAS REGIONAL EXTENSION CENTER (NTREC) WAS ESTABLISHED AS A PROGRAM BY THE DFWHC FOUNDATION

in April 2010 following an agreement with the Office of National Coordinator for Health IT in the US Department of Health and Human Services. Sixty-two regional extension centers (RECs) were established around the country, including four in Texas.

The primary purpose of NTREC is to promote the adoption and meaningful use of Electronic Health Records (EHR) in health care. NTREC has a target of assisting 1,498 providers within two years. To date, NTREC has enrolled 561 providers, or 37 percent of its target goal. NTREC leads Texas RECs and ranks 50th out of 62 U.S. RECs. So there's still work to do. Working towards this goal, NTREC hosted a health IT workshop at Texas Christian University May 19. These workshops will occur every two months.



The four Texas RECs are now considering new forms of communications provided by Southwest Telepresence Network, an institute of the University of Texas at Dallas. These communications alternatives between RECs, providers and vendors are expected to reduce time and travel costs. NTREC is also initiating a quality assurance program by conducting visits to provider sites to assure the quality of services and to seek ideas for improvement.

For more information about NTREC or EHR, please visit www.ntrec.org or call 469-648-5044.

1,498

PROVIDERS REACHED

42

TEXAS COUNTIES SERVICED

20

CME HOURS OFFERED

The vision of the North Texas Regional Extension Center (NTREC) is to provide assistance to primary care providers in overcoming the major barriers of "Meaningful Use" of Electronic Health Records. If information is the lifeblood of medicine, then Health Information Technology is the 21st century circulatory system.



KONICA MINOLTA



bizhub benefits

healthcare applications



How Konica Minolta helps hospitals, clinics, laboratories, healthcare providers and administrators convert to Electronic Medical Records, conform to HIPAA certification standards, implement security safeguards, control costs, and streamline document workflow.

Dallas: Ron Otis
(972)523-5946

Fort Worth: Rob McGilvrey
(972)478-6608

COUNT ON KONICA MINOLTA

1,500+ LOCAL PHYSICIANS ARE PROVIDING BETTER CARE.

OUR RESEARCH.

30 MILLION

The DFWHC Foundation and the Dallas-Fort Worth Hospital Council have partnered together to successfully implement, manage and monitor more than 30 million dollars in Federal, State and private foundation grants.

OUR VOLUNTEERS.

4,301 HOURS

The DFWHC Foundation partners have donated 4,301 hours to committees supporting the North Texas Nursing Resource Center, Workforce Advisory Board, Community Health Collaborative, Patient Safety/Quality and Data Services.

WHERE WE STAND NOW.

14 YEARS

OF DATA COLLECTED

6.8 MILLION

PATIENTS REPRESENTED

20 MILLION

HOSPITAL VISITS

OUR OBJECTIVES.

95%

Collect vital patient data from 95% of Dallas-Fort Worth hospitals.

100%

Address community health issues for 100% of North Texas residents.

100%

100% of donations to our nursing scholarship fund go directly to students in financial need.



www.dfwhcfoundation.org